

PixelGate Arma

Cascadable direct ArtNet/sACN to SPI LED pixel strip driver

Version: 2.10
26 Oct 2017



User-Friendly
Web Interface



UltraStart



Natural Heat
Convection



Highest Ingress
Protection

Application

Control drivers of LED pixel strips by converting ArtNet/sACN to SPI

Drivers for LED light curtains with individual pixel control

Drivers for LED strip installations with individual pixel control

Drivers for mapped LED strip screens

Mapping of moving images on free-form objects

ArtNet/sACN to SPI controllers for pixel mapped indoor and outdoor LED strip installations. Two Ethernet ports and integrated switch provide cascability. Directly convert up to 16 DMX universes into SPI to control 2,730 RGB pixels supporting up to 8 separate LED outputs.

By default support WS28xx LEDs with additional LED types available by remote firmware update. Power supplied to LEDs separately, from 5V to 48V. Outputs are configurable through web-based management page. Tough and compact waterproof enclosure (IP65) specifically crafted for outdoor use.

Advantages

Cascadable through integrated switch and 2 Ethernet ports

Support ArtNet and sACN

LEDs with power supply up to 48V

Work with two-wire and three-wire strips

Support various LED types

Natural heat convection, no fans or coolers, no vent slots – full protection from dust and smoke increases product lifetime

Power source 5/12/24/48 VDC

PixelGate Arma

Cascadable direct ArtNet/sACN to SPI LED pixel strip driver

Technical Specifications

Mechanical

- Housing: Solid case
- Material: Metal
- Dimensions, mm: 115(D) x 55(H) x 90(W)
- Mass: 0.85 kg
- Mounting: Surface, Truss

Power & Electrical

- Power supply: 5/12/24/48 VDC

Environmental

- Operating Temperature: -40...+70°C
- Storage Temperature: -50...+80°C
- Operating Relative Humidity (max): 100%
- IP Rating: IP65 for outdoor use
- Certification: CE, RoHS
- Warranty: 36 Month (Return to base)

Control / Data Connections

- Control interface: ArtNet I, II, III, IV/ sACN
- Channels: 4 or 8 SPI
- Supported LEDs: WS2812, WS2811

Inputs / Outputs

- LED outputs: up to 8, TTL 3/5V
- Ethernet ports: 2 (10/100 Base-TX)
- Ethernet connectors: 2 (LSA-PLUS® connectors)

Configuration / Indication

- Setup: Web interface
- Indication: LED for Ethernet activity

Package Contents

- PixelGate Arma
- User guide

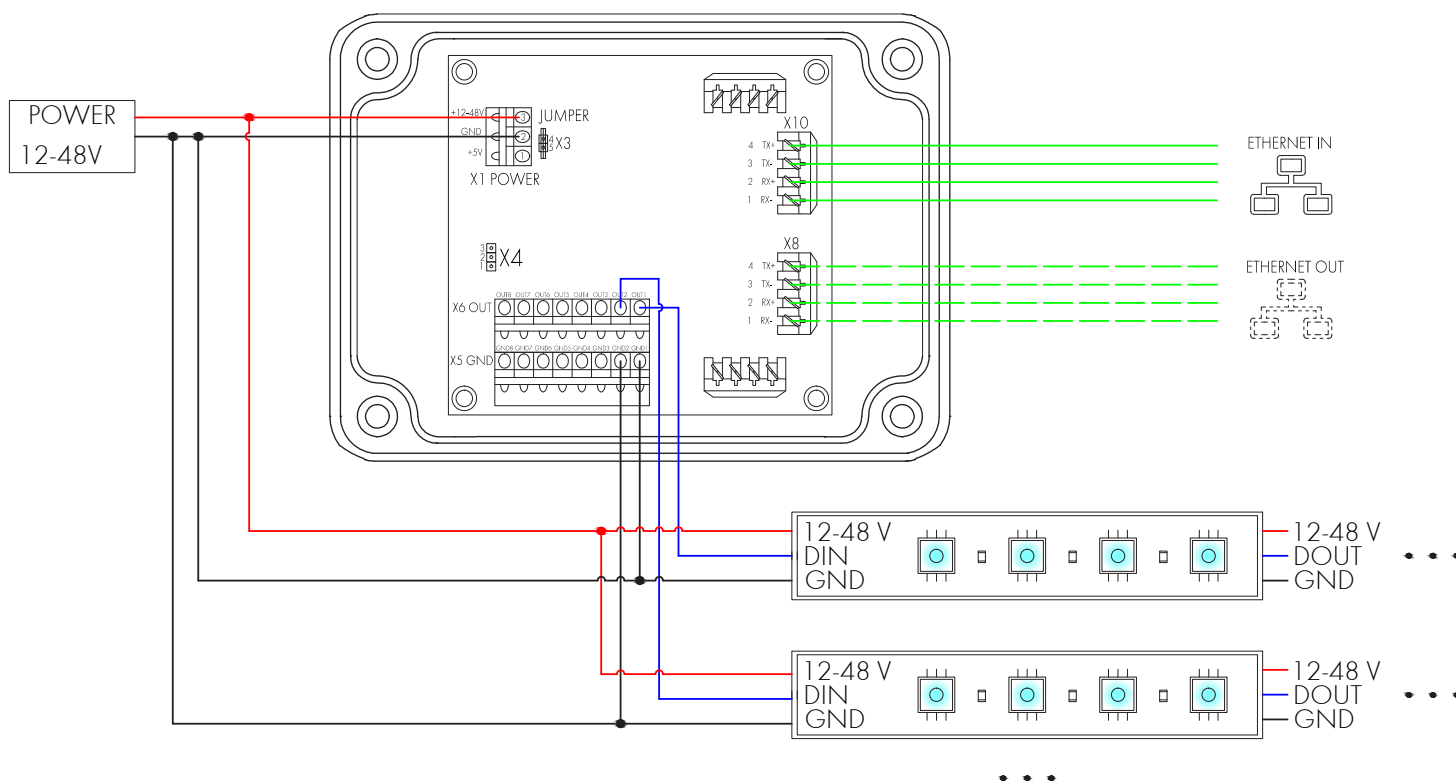
Product Line

Name	Modification	Product code
PixelGate Arma	4 LED ports, 2 Ethernet ports (1365 RGB pixels)	PXA-0-2E4SPI
	8 LED ports, 2 Ethernet ports (2730 RGB pixels)	PXA-0-2E8SPI

PixelGate Arma

Cascadable direct ArtNet/sACN to SPI LED pixel strip driver

Connection Scheme



When using **12-48V** power source, set the jumper at **X3** connector.
When using **5V** power source, jumper is **not** installed.

When using **5V** output signal: set the jumper at **1 and 2** pins of **X4** connector.
When using **3.3V** output signal: set the jumper at **2 and 3** pins of **X4** connector.



ATTENTION!

Incorrect jumper connection may cause device malfunction.

Accessories

Name	Product code
Truss mounting kit (2-port device)	MCA-1-113

Disclaimer

To the best of our knowledge, the technical data contained herein is true and accurate at the date of issuance and is subject to change without prior notice. No liability accepted for errors or omissions. Always make sure to use the most recent release and contact Sundrax Electronics to verify correctness before placing your order.