



Three Models S | M | L

Dual 9mm cable attachment points

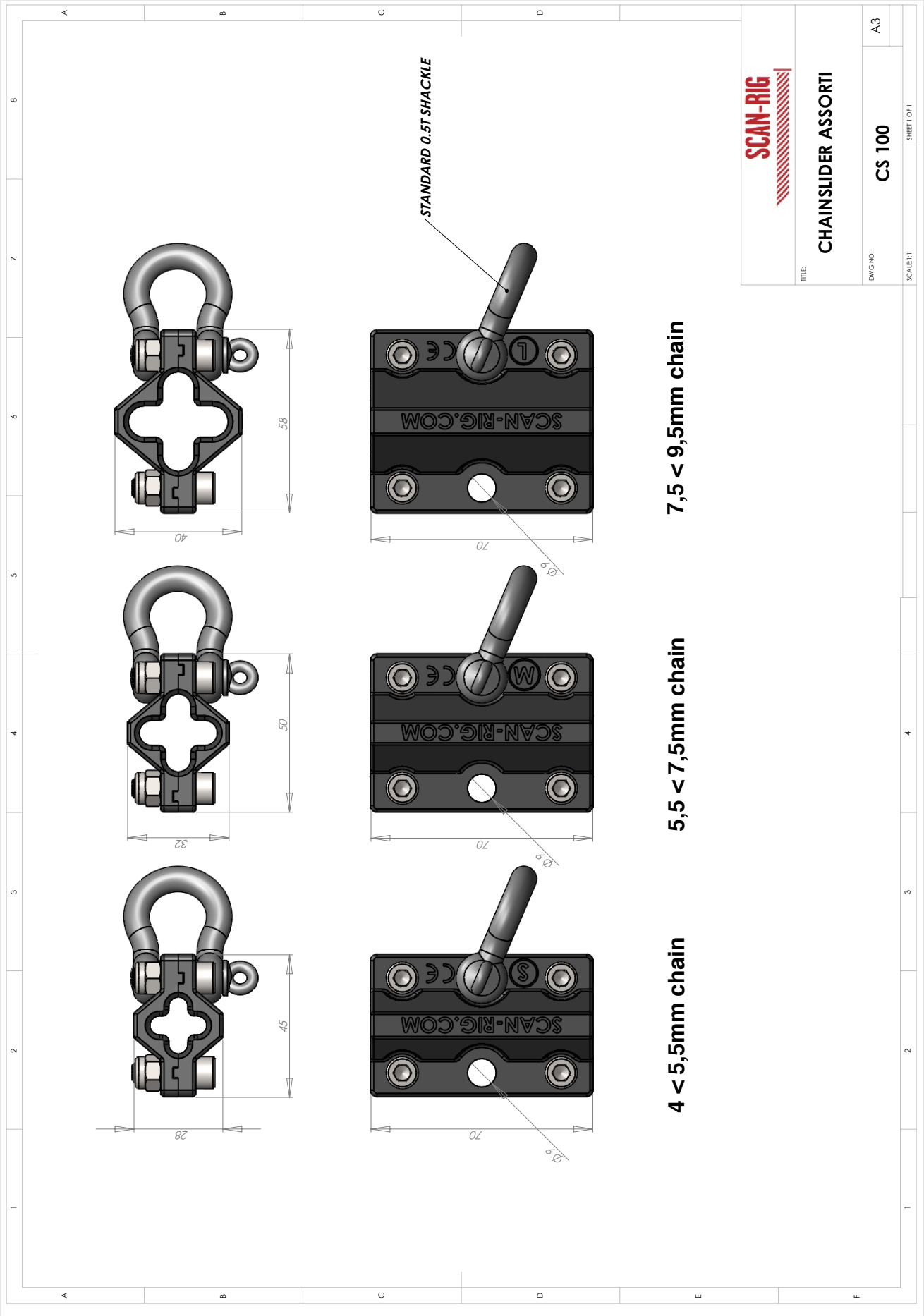
Designed to work with Industry standard hoist

Can be fitted on a load-bearing chain

Made out of low friction Black Polyoxymethylene (POM)

Stainless steel M6 Hex bolts and Nylocks included

CHAINSLIDER



TITLE: CHAINSLIDER ASSORTI

DWG NO. CS 100

SCALE: 1:1 SHEET OF 1

A3