

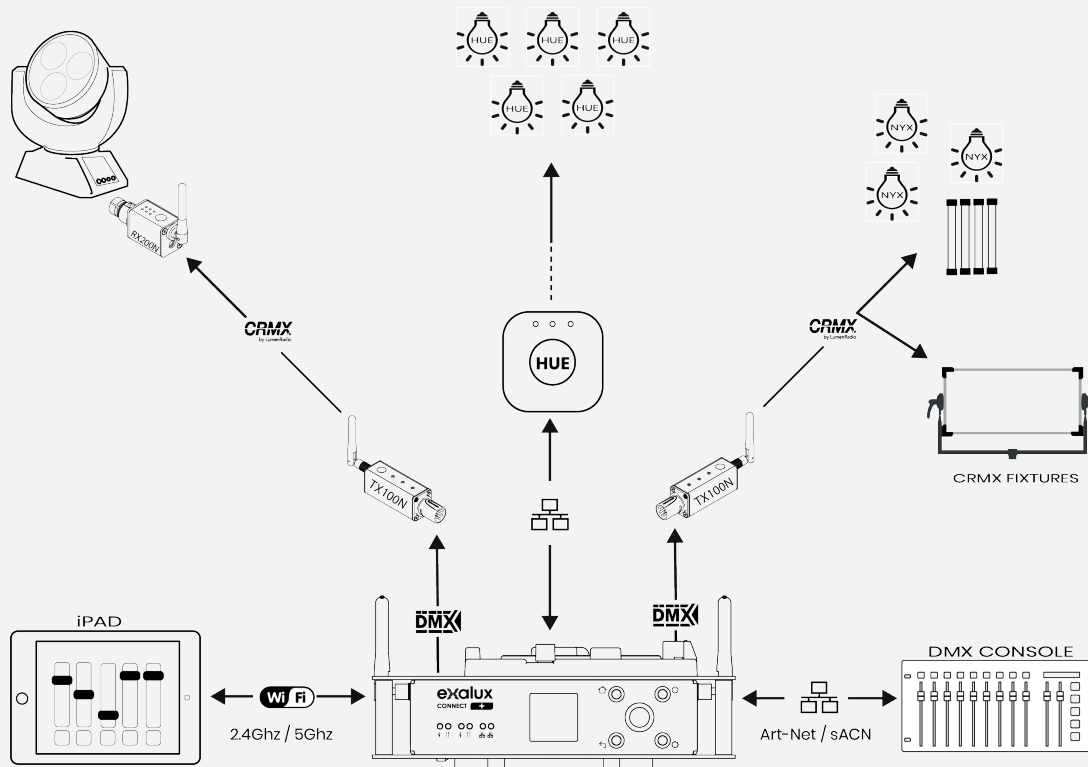
CONNECT+

EXALUX™ CONNECT+ is a dual band Wi-Fi Art-Net to DMX gateway (converter) that Allows wireless lighting control via Art-net compatible App.



CONNECT+ is compatible with the most of DMX Apps (BlackOut, DMX Connect+, Luminair)..

CONNECT + features a dual band MiMo Wi-Fi enables to be use close to CRMX transmitters. The unit can be powered in different ways, either by a V-LOCK battery, an external DC power supply, or by the RJ45 port and an external PoE injector.



CONNECT + features the new PoD (Power over DMX) technology that makes it possible to directly power the PoD-compliant equipment via the XLR connector.

PARTS & ACCESSORIES

CONNECT + BASIC	CNT.003.001
DIRECTIONAL ANTENNA	ACC.000.012
D-TAP TO DC JACK CABLE	COR.001.025
USB-A TO DC JACK CABLE	COR.001.026

CONNECT+ ADVANTAGES

- Built-in dual band Wi-Fi MiMo access point
- Built-in dual universe DMX node
- Built-in DMX recorder
- Expandable via the Connect Extension Port
- Firmware upgrade through USB port
- Multiple power supply possibilities
- Power over DMX (PoD) capability on DMX outputs

CONNECT+ BENEFITS

- Reliable 2.4 & 5GHz Wi-Fi
- Wi-Fi Band & channel selection
- Multiple uses (DMX gateway, Recorder)
- Long time running on a standard V-LOCK battery
- HUE ready thanks to the Ethernet ports
- Allows to manage up to 1024 DMX channels
- Remotely powered thanks to the PoE-PD

FEATURES

Network	Wi-Fi (2.4GHz) / Wi-Fi (5.0GHz) / Ethernet 10/100Mbps
Protocol	Supports Art-Net 1/2/3, Streaming ACN sACN
Power	DC.Jack, V-Lock battery, PoE-PD, PoD-PSE Output
Interface	Colour TFT display (/w buttons), LED indicators, backlit buttons
Others	Basic recorder (onboard card) Backup/restore settings (USB flash drive) Display backlight settings (level & screen saver), Security restrictions (pin code protected) Firmware upgrade via USB flash drive (not provided)

TECHNICAL SPECIFICATIONS

Power Connection	2.1x5.5MM DC jack / V-Lock / PoE (Eth.2)
Power Consumption	12W max (20W max with extension)
Housing / Mounting	Aluminium, black painting, magnetic rubber feet / M10
IP Rating	IP20
Certifications	CE, RoHS
Weight	890g

WIRELESS INTERFACE

Standard	Wi-Fi IEEE 802.11 a/b/g/n Bluetooth Classic 4.2 Bluetooth Low Energy
Frequency	Wi-Fi : 2.412 ~ 2.484 GHz (13 ch) Wi-Fi : 5.180 ~ 5.845 GHz (35 ch) Bluetooth : 2.402 ~ 2.480 GHz
Antenna	Whip hinged antenna, 50Ω, female RP-SMA (x2)
RF Output / Sensitivity	Wi-Fi : 17 dBm Bluetooth : 20dBm
Range	Wi-Fi (2.4GHz) : ~100m Wi-Fi (5GHz) : ~50m BT : ~10m

DMX INTERFACE

Protocol	DMX512-A
Universe Support	2 (one per output)
DMX Frame Rate	0,8-830Hz
End to End Latency	< 5ms
DMX Outputs	Neutrik XLR 5 pins Female (2)

POWER

DC Jack	5~28V _{DC}
V-Lock	14.4-14.8VDC~26V _{DC}
PoE-PD	48V _{DC} IEEE 802.3af-2002 Type 1 13W

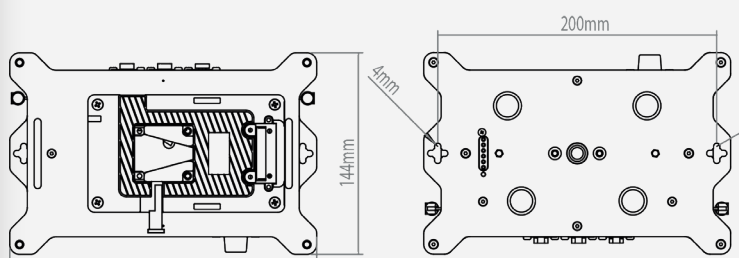
ETHERNET INTERFACE

Standard	IEEE 802.3 10/100 Mbps
Ports	RJ45 8P/8C (1), Neutrik EtherCON (1)

USB INTERFACE

Standard	USB 2.0 Hi-Speed
Ports	USB-A Host (1), charging CDP USB-A 0.5A (2),
Extension	+5VDC, USB Host (2), 6-position spring-loaded connector

DIMENSIONS



OPERATING CONDITIONS

	Min	Typ	Max	
Storage T°	-30		+80	°C
Operating T°	-20	25	+70	°C

