

exalux **ROCK**

W I D E



LUX		3400 @ 1m
W		100
K		2700 ▶ 6500
TLCI		98



Benefits

- ▶ Finely tunable CCT
- ▶ Accurate dimming from 0 to 100%
- ▶ Constant luminous flux at any CCT
- ▶ Perfect colour rendition at any CCT
- ▶ High luminous efficiency
- ▶ 100% Flicker Free
- ▶ Rainproof

GENERAL CHARACTERISTICS

Light Engine :	LuXIFY™ Xtrem White Dot Matrix
Lighting sources :	SMD LED, LM80 certified
CCT Adjustment :	50K per step
Flux Adjustment :	0,1%
Efficiency @24V :	81 lm/W
Wired control :	DMX 512 (XLR5), galvanic isolation
Wireless control :	Bluetooth 4.0
Protection class :	IP54
Standards :	CE, RoHS
Warranty :	3 years, parts and labour, return to factory

MECHANICAL CHARACTERISTICS

Housing/Frame:	Aluminium
Light diffuser:	PMMA Crystal
Dimensions:	550 X 270 X 60mm
Weight:	8kg
Mounting :	Yoke + Baby receiver adapter 5/8" 28mm



OPERATING CONDITIONS @ Ta = 20°C

Parameter (Values at ffull brightness)	Symbol	Min	Typical	Max	Unit
Input Voltage	V _{in}	14		24	V
Input Power @24VDC	P _{in}			100	W
Standby Power Consumption	P		IHM		W
Storage Temperature Range	T _{st}	-40		+100	°C
Operating Temperature Range	Top	-30	25	+85	°C

PHOTOMETRICS DATA @Ta = 20°C

Parameter	Symbol	Min	Typical	Max	Unit
Luminous Flux @100%	Φ _v	-	8100		lm
Correlated Colour Temperature	TCp	2700		6500	K
Beam angle (@ 50%)			120		°

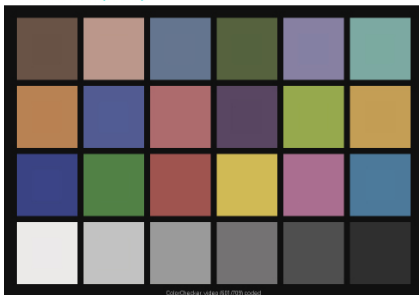
Colour Rendition	TLCI	IRC = RA	R9	R13	R15
Luminous Flux @100% @3200K	98	96	88	95	94
@4300K	98	96	81	95	91
@5600K	98	96	89	96	93

Illuminance		@ 1m / 5ft	@ 1,5m / 10ft	@ 3m / 15ft
Luminous flux @100%	lux footcandles	3400 298	1500 139	400 37

TLCI COLOUR CHECKER

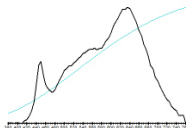
@3200K

CCT = P3203 (-0.4)
TLCI-2012 : 98 (P3203)



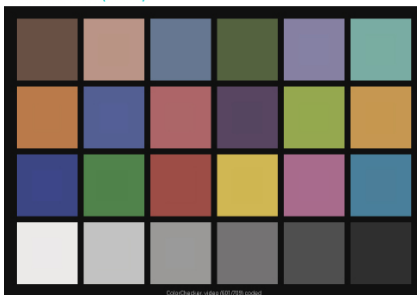
Television Lighting Consistency Index-2012

Sector	Lightness	Chroma	Hue
R	0	0	0
R/Y	0	0	0
Y	0	0	0
Y/G	0	0	0
G	0	0	0
G/C	0	0	0
C	0	0	+
C/B	0	0	0
B	0	0	0
B/M	0	0	+
M	0	0	+
M/R	0	0	0



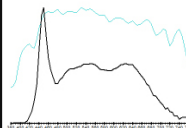
@5600K

CCT = D5525 (-1.5)
TLCI-2012 : 98 (D5525)

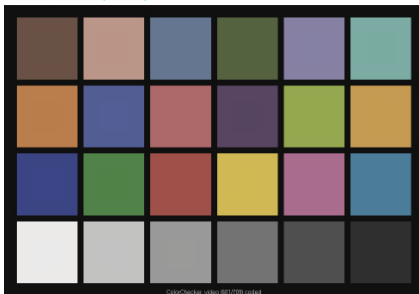


Television Lighting Consistency Index-2012

Sector	Lightness	Chroma	Hue
R	0	0	0
R/Y	0	0	-
Y	0	0	0
Y/G	0	0	0
G	0	0	0
G/C	0	0	+
C	0	0	0
C/B	0	0	0
B	0	-	-
B/M	0	0	0
M	0	0	0
M/R	0	0	0

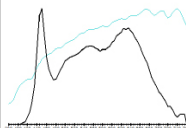


CCT = M4275 (-1.3)
TLCI-2012 : 98 (M4275)



Television Lighting Consistency Index-2012

Sector	Lightness	Chroma	Hue
R	0	0	0
R/Y	0	0	0
Y	0	0	0
Y/G	0	0	0
G	0	0	0
G/C	0	0	0
C	0	0	+
C/B	0	0	0
B	0	-	-
B/M	0	0	0
M	0	0	0
M/R	0	0	0



@4300K



exalux