

# exalux ROCK



LUX		<b>1700 @ 1m</b>
W		<b>50</b>
K		<b>2700 ▶ 6500</b>
TLCI		<b>98</b>

## BENEFITS

- ▶ Finely tunable CCT
- ▶ Accurate dimming from 0 to 100%
- ▶ Constant luminous flux at any CCT
- ▶ Perfect colour rendition at any CCT
- ▶ High luminous efficiency
- ▶ 100% Flicker Free
- ▶ Rainproof

## GENERAL CHARACTERISTICS

<b>Light Engine :</b>	LuXIFY™ Tunable White Dot Matrix
<b>Lighting sources :</b>	SMD LED, LM80 certified
<b>CCT Adjustment:</b>	50K per step
<b>Flux Adjustment:</b>	0,1%
<b>Efficiency @24V :</b>	81 lm/W
<b>Wired control:</b>	DMX 512 (XLR5), galvanic isolation
<b>Wireless control:</b>	Bluetooth 4.0
<b>Protection class:</b>	IP54
<b>Standards:</b>	CE, RoHS
<b>Warranty:</b>	3 years, parts and labour, return to factory

## MECHANICAL CHARACTERISTICS

<b>Housing/Frame:</b>	Aluminium
<b>Light diffuser:</b>	PMMA Crystal
<b>Dimensions:</b>	270 X 270 X 60mm
<b>Weight:</b>	3kg
<b>Mounting :</b>	Yoke + Baby receiver adapter 5/8" 16mm

## OPERATING CONDITIONS @ Ta = 20°C

Parameter	Symbol	Min	Typical	Max	Unit
(Values at full brightness)					
Input Voltage	V <sub>in</sub>	14		24	V
Input Power @24VDC	P <sub>in</sub>			50	W
Standby Power Consumption	P		0,045		W
Storage Temperature Range	T <sub>st</sub>	-40°C		+100°C	°C
Operating Temperature Range	T <sub>op</sub>	-30	25	+50	°C

## PHOTOMETRICS DATA @Ta = 20°C

Parameter	Symbol	Min	Typical	Max	Unit
Luminous Flux @100%	Φ <sub>v</sub>	-	4060		lm
Correlated Colour Temperature	CCT	2700		6500	K
Beam angle (@ 50%)			120°		

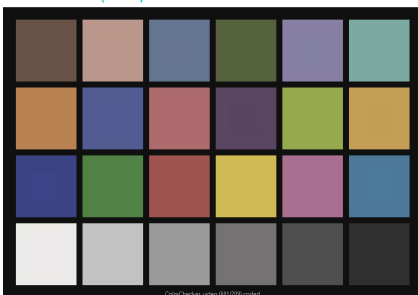
Colour Rendition	TLCI	IRC = RA	R9	R13	R15
Luminous Flux @100%					
@3200K	98	96	88	95	94
@4300K	98	96	81	95	91
@5600K	98	96	89	96	93

Illuminance		@ 1m / 5ft	@ 1,5m / 10ft	@ 3m / 15ft
Luminous flux @100%	lux footcandles	1700 158	800 74	220 21

## TLCI COLOUR CHECKER

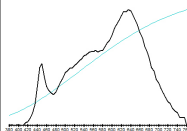
### @3200K

CCT = P3203 ( -0.4 )  
TLCI-2012 : 98 (P3203)



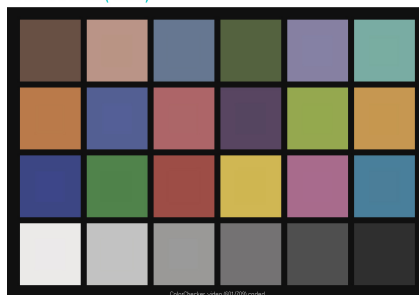
### Television Lighting Consistency Index-2012

Sector	Lightness	Chroma	Hue
R	0	0	0
RY	0	0	0
Y	0	0	0
YG	0	0	0
G	0	0	0
GC	0	0	0
C	0	0	+
CB	0	0	0
B	0	0	0
BM	0	0	+
M	0	0	+
MR	0	0	0



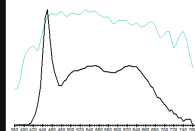
### @5600K

CCT = D5525 ( -1.5 )  
TLCI-2012 : 98 (D5525)

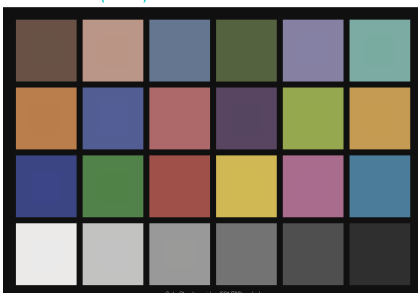


### Television Lighting Consistency Index-2012

Sector	Lightness	Chroma	Hue
R	0	0	0
RY	0	0	0
Y	0	0	0
YG	0	0	0
G	0	0	0
GC	0	0	+
C	0	0	0
CB	0	0	0
B	0	0	0
BM	0	0	+
M	0	0	0
MR	0	0	0

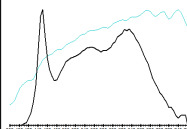


CCT = M4275 ( -1.3 )  
TLCI-2012 : 98 (M4275)



### Television Lighting Consistency Index-2012

Sector	Lightness	Chroma	Hue
R	0	0	0
RY	0	0	0
Y	0	0	0
YG	0	0	0
G	0	0	0
GC	0	0	0
C	0	0	+
CB	0	0	0
B	0	0	0
BM	0	0	+
M	0	0	0
MR	0	0	0



### @4300K

