

LED LIGHT



DMX CONTROL



DIMMER



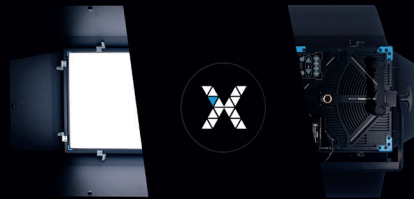
POWER



APPS



exalux



**LED AND WIRELESS CONTROL SOLUTIONS
FOR THE FILM INDUSTRY**



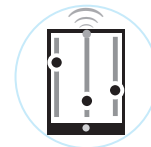
ROCK•WIDE



TUNABLE WHITE
2700K ▶ 6500K



ILLUMINANCE
3250 lux @ 1m



WIRELESS CONTROL
Bluetooth 4.0



DMX IN & OUT
XLR 5PTS

BENEFITS

- ▶ Finely tunable CCT
- ▶ Accurate dimming from 0 to 100%
- ▶ Constant luminous flux at any CCT
- ▶ Perfect colour rendition at any CCT
- ▶ High luminous efficiency
- ▶ 100% Flicker Free
- ▶ Rainproof



GENERAL CHARACTERISTICS

Light Engine :	LuXIFY™ Xtrem White Dot Matrix
Lighting sources :	SMD LED, LM80 certified
CCT Adjustment :	50K per step
Flux Adjustment :	0,1%
Efficiency @24V :	81 lm/W
Wired control :	DMX 512 (XLR5), galvanic isolation
Wireless control :	Bluetooth 4.0
Protection class :	IP54
Standards :	CE, RoHS
Warranty :	3 years, parts and labour, return to factory

MECHANICAL CHARACTERISTICS

Housing/Frame:	Aluminium
Light diffuser:	PMMA Crystal
Dimensions:	550 X 270 X 60mm
Weight:	8kg
Mounting :	Yoke + Baby receiver adapter 5/8" 28mm

OPERATING CONDITIONS @ Ta = 20°C

Parameter (Values at full brightness)	Symbol	Min	Typical	Max	Unit
Input Voltage	V _{in}	14		24	V
Input Power @24VDC	P _{in}			100	W
Standby Power Consumption	P		0,100		W
Storage Temperature Range	T _{st}	-40		+100	°C
Operating Temperature Range	Top	-30	25	+85	°C

PHOTOMETRICS DATA @Ta = 20°C

Parameter	Symbol	Min	Typical	Max	Unit
Luminous Flux @100%	Φ _v	-	8100		lm
Correlated Colour Temperature	TCp	2700		6500	K
Beam angle (@ 50%)			120		°

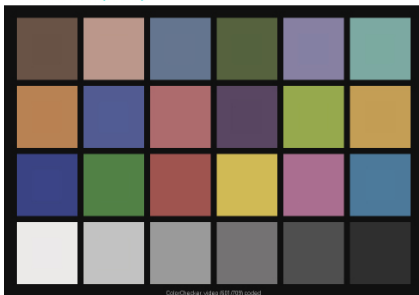
Colour Rendition	TLCI	IRC = RA	R9	R13	R15
Luminous Flux @100%					
@3200K	98	94	88	95	94
@4300K	98	93	81	95	91
@5600K	98	93	89	96	93

Illuminance		@ 1m / 5ft	@ 1,5m / 10ft	@ 3m / 15ft
Luminous flux @100%	lux footcandles	3250 298	1433 139	360 37

TLCI COLOUR CHECKER

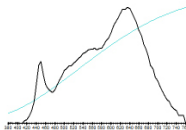
@3200K

CCT = P3203 (-0.4)
TLCI-2012 : 98 (P3203)



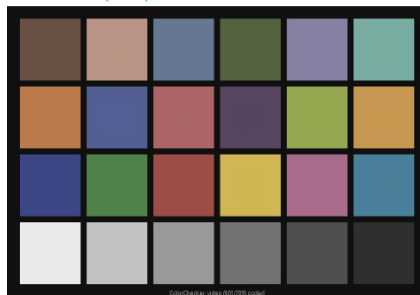
Television Lighting Consistency Index-2012

Sector	Lightness	Chroma	Hue
R	0	0	0
R/Y	0	0	0
Y	0	0	0
Y/G	0	0	0
G	0	0	0
G/C	0	0	0
C	0	0	+
C/B	0	0	0
B	0	0	0
B/M	0	0	+
M	0	0	+
M/R	0	0	0



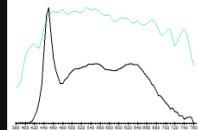
@5600K

CCT = D5525 (-1.5)
TLCI-2012 : 98 (D5525)

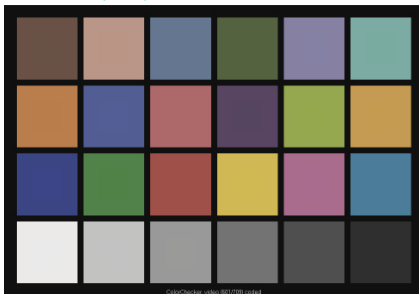


Television Lighting Consistency Index-2012

Sector	Lightness	Chroma	Hue
R	0	0	0
R/Y	0	0	0
Y	0	0	0
Y/G	0	0	0
G	0	0	0
G/C	0	0	+
C	0	0	0
C/B	0	0	0
B	0	-	-
B/M	0	0	0
M	0	0	0
M/R	0	0	0

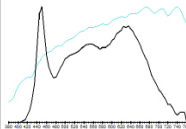


CCT = M4275 (-1.3)
TLCI-2012 : 98 (M4275)



Television Lighting Consistency Index-2012

Sector	Lightness	Chroma	Hue
R	0	0	0
R/Y	0	0	0
Y	0	0	0
Y/G	0	0	0
G	0	0	0
G/C	0	0	0
C	0	0	+
C/B	0	0	0
B	0	-	-
B/M	0	0	0
M	0	0	0
M/R	0	0	0



@4300K



ROCK CLASSIC



TUNABLE WHITE
2700K ▶ 6500K



ILLUMINANCE
1700 lux @ 1m



WIRELESS CONTROL
Bluetooth 4.0



DMX
XLR 5PTS

BENEFITS

- ▶ Finely tunable CCT
- ▶ Accurate dimming from 0 to 100%
- ▶ Constant luminous flux at any CCT
- ▶ Perfect colour rendition at any CCT
- ▶ High luminous efficiency
- ▶ 100% Flicker Free
- ▶ Rainproof

GENERAL CHARACTERISTICS

Light Engine :	LuXIFY™ Tunable White Dot Matrix
Lighting sources :	SMD LED, LM80 certified
CCT Adjustment:	50K per step
Flux Adjustment:	0,1%
Efficiency @24V :	81 lm/W
Wired control:	DMX 512 (XLR5), galvanic isolation
Wireless control:	Bluetooth 4.0
Protection class:	IP54
Standards:	CE, RoHS
Warranty:	3 years, parts and labour, return to factory

MECHANICAL CHARACTERISTICS

Housing/Frame:	Aluminium
Light diffuser:	PMMA Crystal
Dimensions:	270 X 270 X 60mm
Weight:	3kg
Mounting :	Yoke + Baby receiver adapter 5/8" 16mm

OPERATING CONDITIONS @ Ta = 20°C

Parameter	Symbol	Min	Typical	Max	Unit
(Values at full brightness)					
Input Voltage	V _{in}	14		24	V
Input Power @24VDC	P _{in}			50	W
Standby Power Consumption	P		0,045		W
Storage Temperature Range	T _{st}	-40°C		+100°C	°C
Operating Temperature Range	T _{op}	-30	25	+50	°C

PHOTOMETRICS DATA @Ta = 20°C

Parameter	Symbol	Min	Typical	Max	Unit
Luminous Flux @100%	Φ _v	-	4060		lm
Correlated Colour Temperature	CCT	2700		6500	K
Beam angle (@ 50%)			120°		

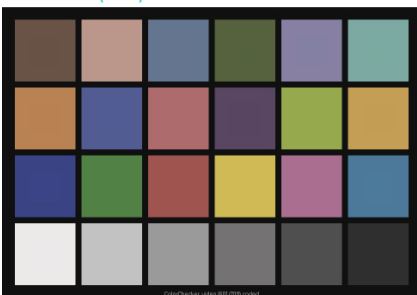
Colour Rendition	TLCI	IRC = RA	R9	R13	R15
Luminous Flux @3200K	98	96	88	95	94
Luminous Flux @100% @4300K	98	96	81	95	91
Luminous Flux @100% @5600K	98	96	89	96	93

Illuminance		@ 1m / 5ft	@ 1,5m / 10ft	@ 3m / 15ft
Luminous flux @100%	lux footcandles	1700 158	800 74	220 21

TLCI COLOUR CHECKER

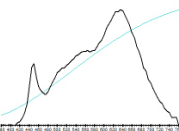
@3200K

CCT = P3203 (-0.4)
TLCI-2012 : 98 (P3203)



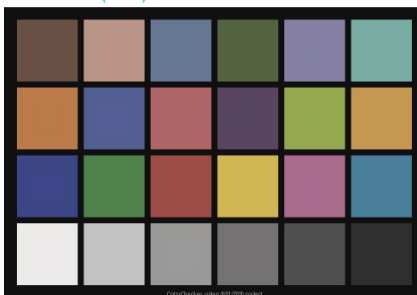
Television Lighting Consistency Index-2012

Sector	Lightness	Chroma	Hue
R	0	0	0
RY	0	0	0
Y	0	0	0
YG	0	0	0
G	0	0	0
GC	0	0	0
C	0	0	+
CB	0	0	0
B	0	0	0
BM	0	0	+
M	0	0	+
MR	0	0	0



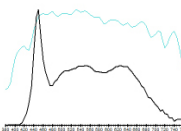
@5600K

CCT = D5525 (-1.5)
TLCI-2012 : 98 (D5525)

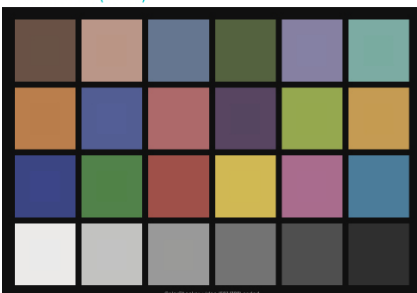


Television Lighting Consistency Index-2012

Sector	Lightness	Chroma	Hue
R	0	0	0
RY	0	0	0
Y	0	0	0
YG	0	0	0
G	0	0	0
GC	0	0	+
C	0	0	0
CB	0	0	0
B	0	-	-
BM	0	0	0
M	0	0	0
MR	0	0	0

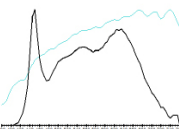


CCT = M4275 (-1.3)
TLCI-2012 : 98 (M4275)



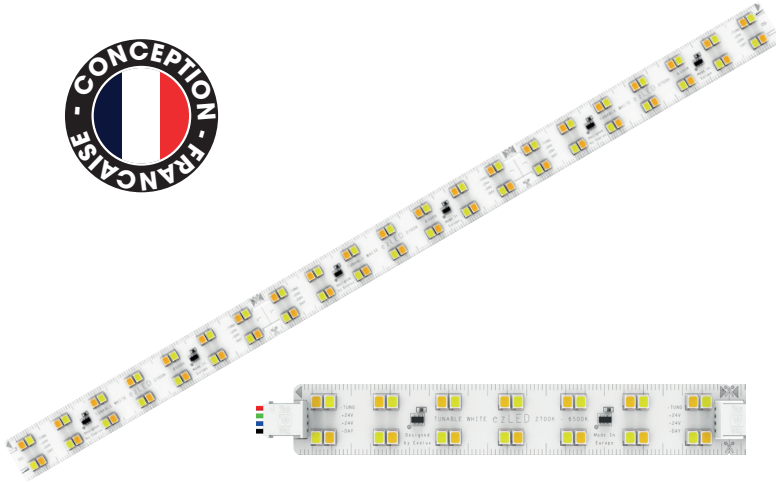
Television Lighting Consistency Index-2012

Sector	Lightness	Chroma	Hue
R	0	0	0
RY	0	0	0
Y	0	0	0
YG	0	0	0
G	0	0	0
GC	0	0	0
C	0	0	+
CB	0	0	0
B	0	-	-
BM	0	0	+
M	0	0	0
MR	0	0	0



@4300K

ezLED • STRIP20-TW



BICOLOUR
2700K ▶ 6500K



ILLUMINANCE
840 lm



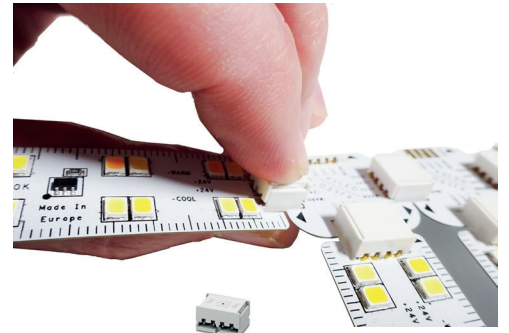
CONSTANT VOLTAGE
24VDC

CHARACTERISTICS & BENEFITS

- ▶ Tunable White high CRI flexible LED strip
- ▶ High power output, no additional heatsink required
- ▶ Solderless connection
- ▶ Selected LED on a single batch, low colour shift
- ▶ Tungsten / Daylight balanced luminous flux
- ▶ 32kHz PMW compatible / fully dimmable
- ▶ Cutable every 112mm

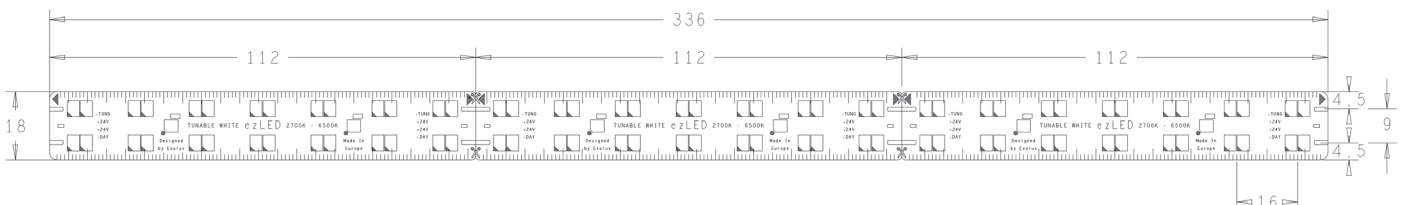
APPLICATIONS

- ▶ Decor lighting
- ▶ Calibration rooms lighting
- ▶ Frame and boxes backlighting
- ▶ Photographic reproduction lighting



GENERAL SPECIFICATIONS

Light source	Tungsten (2700K) : LED SMD 2835 Daylight (6500K) : LED SMD 2835
Dimensions	336 x 18 x 1,30 MM
Cutable sections	3 sections of 112mm
Number of LED	Section : 14 (2700K) + 14 (6500K) Strip : 42 (2700K) + 42 (6500K)
Material	Polyimide high TG 250°
Weight	8,5g
Protection index	IP20
LED lifetime presumption	50 000h (LM-80-08)
Warranty	1 year

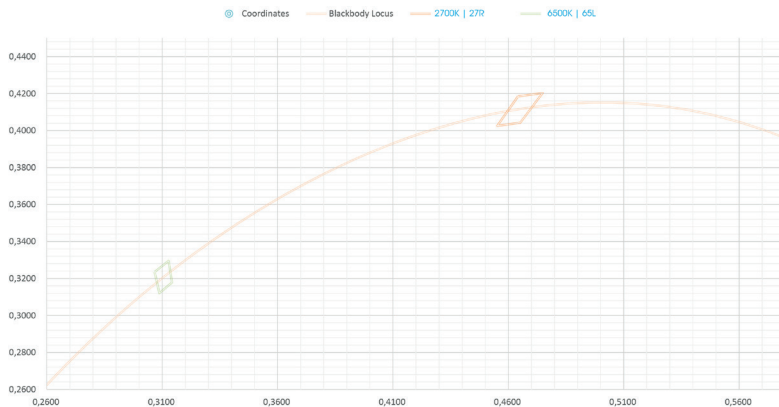
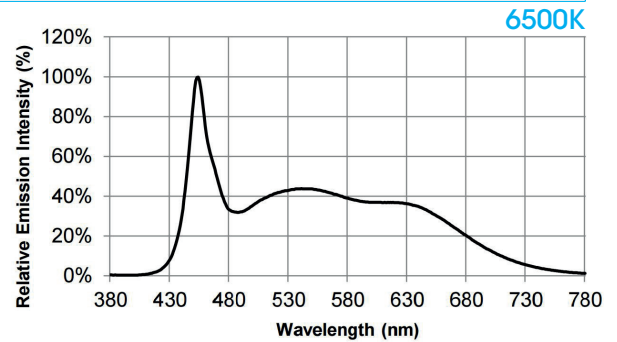
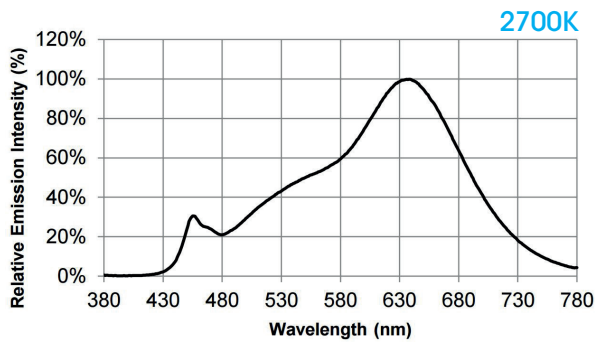


ELECTRICAL SPECIFICATIONS

Supply voltage	Min : 21 VDC TYP : 24VDC Max : 25VDC
Power consumption @24VDC, section	2700K : 1,73W 6500K : 1,39W
Power consumption @24VDC, strip	2700K : 5,18W 6500K : 4,17W
Power consumption @24VDC, meter	2700K : 15,4W 6500K : 12,4W

PHOTOMETRIC SPECIFICATIONS

Correlated colour temperature	Tungsten : 2700K±150K Daylight : 6500K±500K
Colour rendering	Ra @2700K : 95-96 Ra@6500K : 95-96
	R9 @2700K : 93-95 R9@6500K : 93-94
	R13 @2700K : 93-95 R13@6500K : 95-98
	R15 @2700K : 93-95 R15@6500K : 93-94
Luminous flux @24VDC, section	2700K : 140lm ±5% 6500K : 140lm ±5%
Luminous flux @24VDC, strip	2700K : 420lm ±5% 6500K : 420lm ±5%
Delta u'v'	±0.003
Beam angle 2θ1/2	120°



2625±75K | 27R

X0	0,4642
Y0	0,4185
X1	0,4552
Y1	0,4025
X2	0,4652
Y2	0,4043
X3	0,4749
Y3	0,4203

6750±250 | 65L

X0	0,3067
Y0	0,3235
X1	0,3088
Y1	0,3121
X2	0,3143
Y2	0,3178
X3	0,3128
Y3	0,3295

USAGE

Operating temperature	-30°C ▶ 50°C
Heatsink	Not required in normal operation conditions
Daisy chain	11 strips max, i.e. 3 696mm
Mounting	Thermal tape 3M467MP (optional)

ORDERING INFORMATION

Reference	EZL.000.001
EAN Code	3760252030459
Quantity per package	5 pcs
Package dimensions	
Weight	45g

EXALUX FLEXX • TAPE10-TW



BICOLOUR
2700K ▶ 6500K



ILLUMINANCE
1060 lm/m



CONSTANT VOLTAGE
12VDC

CHARACTERISTICS & BENEFITS

- ▶ Professional bicolour LED ribbon, with very high colour rendering
- ▶ Selected LED on a single batch
- ▶ Constant voltage supply
- ▶ Low colour shifting
- ▶ Cuttable every 50mm

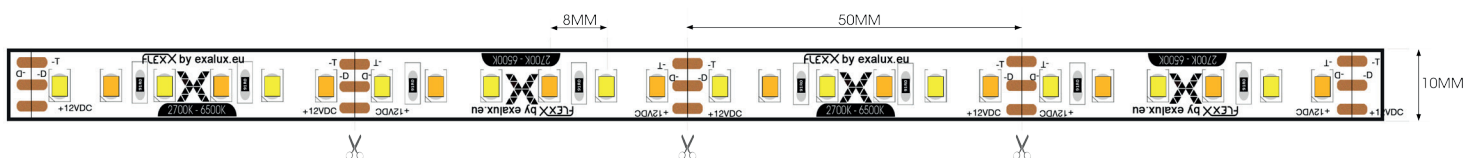
APPLICATIONS

- ▶ Decor lighting
- ▶ Calibration rooms lighting
- ▶ Frame and boxes backlighting
- ▶ Photographic reproductions lighting



GENERAL SPECIFICATIONS

Light source	Tungsten (2700K) : LED SMD 2835 Daylight (6500K) : LED SMD 2835
Dimensions	5000 x 10 x 1,30 mm
Cuttable sections	100 sections of 50mm
Number of LED	Section : 3 (2700K) + 3 (6500K) Meter : 60 (2700K) + 60 (6500K)
Material	Polyimide + 3M 200MP adhesive Tape
Protection index	IP20
LED lifetime presumption	50 000h (LM-80-08)
Warranty	1 year

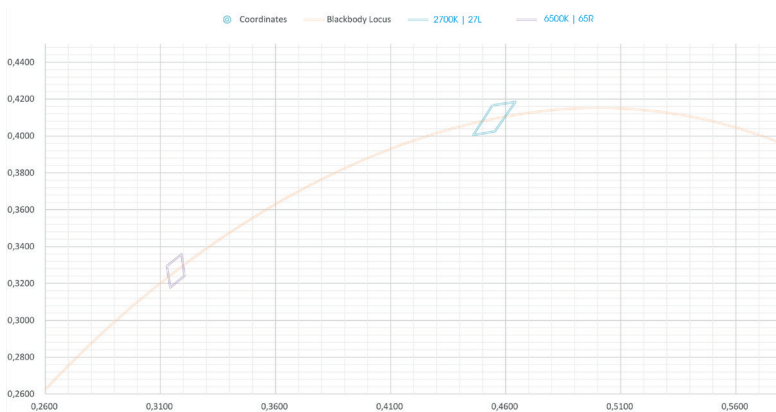
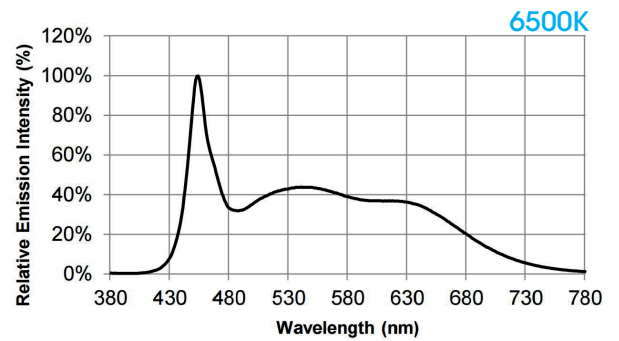
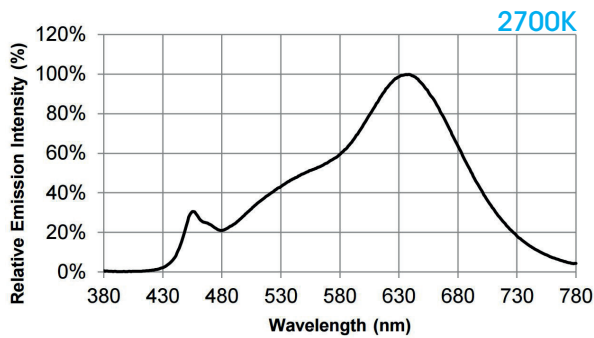


ELECTRICAL SPECIFICATIONS

Supply voltage	Min : 10 VDC TYP : 12VDC Max : 12VDC
Power consumption@12VDC, section	Min : 0,75W MAX : 0,9W
Power consumption@12VDC, meter	Min : 15W MAX : 18W
Power consumption@12VDC, reel	Min : 75W MAX : 90W

PHOTOMETRIC SPECIFICATIONS

Correlated colour temperature	Tungsten : 2700K±150K Daylight : 6500K±500K
Colour rendering	Ra @2700K : 95-96 Ra@6500K : 95-96
	R9 @2700K : 93-95 R9@6500K : 93-94
	R13 @2700K : 93-95 R13@6500K : 95-98
	R15 @2700K : 93-95 R15@6500K : 93-94
Luminous flux @12VDC, section	2700K : 23lm ±5% 6500K : 27lm ±5%
Luminous flux @12VDC, meter	2700K : 460lm ±5% 6500K : 600lm ±5%
Luminous flux @12VDC, reel	2700K : 2300lm ±5% 6500K : 3000lm ±5%
Delta u'v'	±0.003
Beam angle 2θ1/2	120°



2775±75K 27L	
X0	0,4542
Y0	0,4166
X1	0,4459
Y1	0,4005
X2	0,4552
Y2	0,4025
X3	0,4642
Y3	0,4185

6250±250K 65R	
X0	0,3128
Y0	0,3295
X1	0,3143
Y1	0,3178
X2	0,3205
Y2	0,3241
X3	0,3192
Y3	0,3359

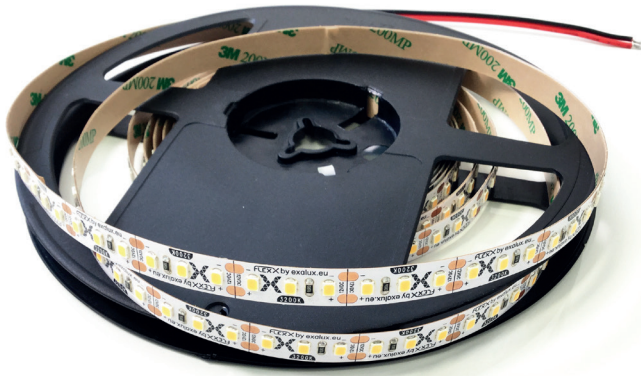
USAGE

Operating temperature	-30°C ▶ 50°C
Heatsink	Not required in normal operating conditions
Termination	Soldering

COMMERCIAL INFORMATION

Reference	FLX.000.008
EAN Code	3760252030442
Packaging	Cardboard box 250x250x15mm + antistatic bag
Weight	Antistatic bag : 160g Box : 230g

EXALUX FLEXX • TAPE10-K32



TUNGSTEN
3200K



ILLUMINANCE
900 lm/m



CONSTANT VOLTAGE
12VDC

CHARACTERISTICS & BENEFITS

- ▶ Professional tungsten LED ribbon, with very high colour rendering
- ▶ Selected LED on a single batch
- ▶ Constant voltage supply
- ▶ Low colour shifting
- ▶ Cuttable every 25mm

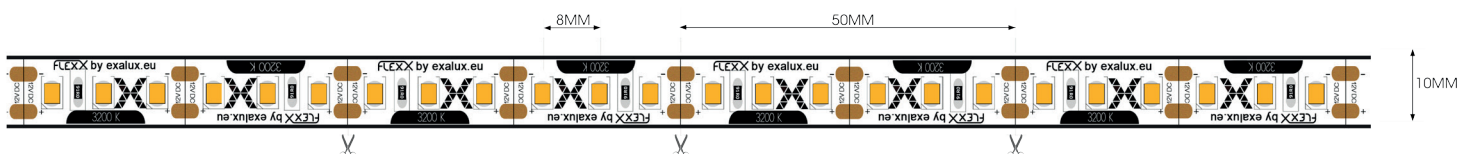
APPLICATIONS

- ▶ Decor lighting
- ▶ Calibration rooms lighting
- ▶ Frame and boxes backlighting
- ▶ Photographic reproductions lighting



GENERAL SPECIFICATIONS

Light source	LED SMD 2835
Dimensions	5000 x 10 x 1,30 mm
Cuttable sections	200 sections of 25mm
Number of LED	Section : 3 Meter : 120
Material	Polyimide + 3M 200MP adhesive Tape
Protection index	IP20
LED lifetime presumption	50 000h (LM-80-08)
Warranty	1 year

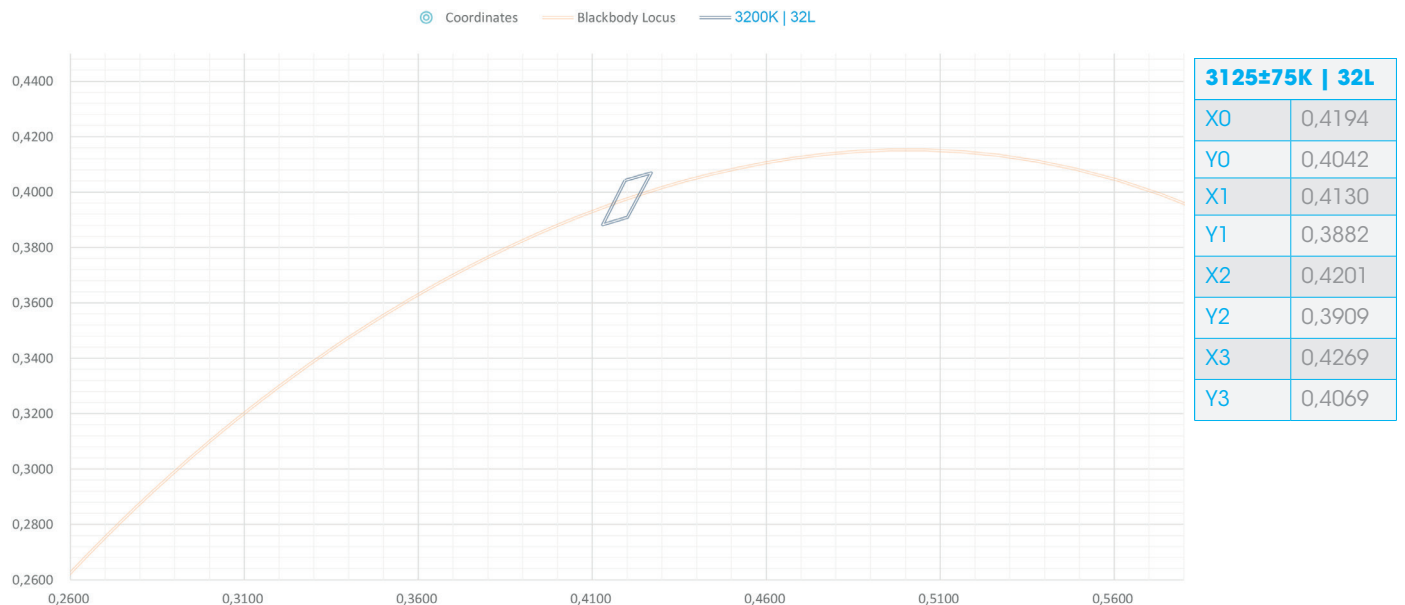
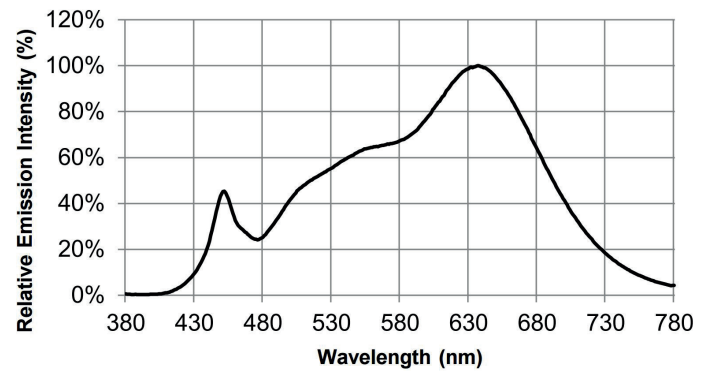


ELECTRICAL SPECIFICATIONS

Supply voltage	Min : 10 VDC TYP : 12VDC Max : 12VDC
Power consumption@12VDC, section	Min : 0,375W MAX : 0,45W
Power consumption@12VDC, meter	Min : 15W MAX : 18W
Power consumption@12VDC, reel	Min : 75W MAX : 90W

PHOTOMETRIC SPECIFICATIONS

Correlated colour temperature	3200K±150K
Colour rendering	R _a : 95-97
	R ₉ : 94-97
	R ₁₃ : 95-97
	R ₁₅ : 95-97
Luminous flux @12VDC, section	22,5lm ±5%
Luminous flux @12VDC, meter	900lm ±5%
Luminous flux @12VDC, reel	4500lm ±5%
Delta u'v'	±0.003
Beam angle 2θ1/2	120°



USAGE

Operating temperature	-30°C ▶ 50°C
Heatsink	Not required in normal operating conditions
Daisy chain	Do not daisy chain two 5-meter reels

COMMERCIAL INFORMATION

Reference	FLX.000.006
EAN Code	3760252030428
Packaging	Cardboard box 250x250x15mm + antistatic bag
Weight	320g

EXALUX FLEXX • TAPE10-K56



DAYLIGHT
5600K



ILLUMINANCE
1300 lm/m



CONSTANT VOLTAGE
12VDC

SPECIFICATIONS & BENEFITS

- ▶ Professional daylight LED ribbon, with very high colour rendering
- ▶ Selected LED on a single batch
- ▶ Constant voltage supply
- ▶ Low colour shifting
- ▶ Cuttable every 25mm

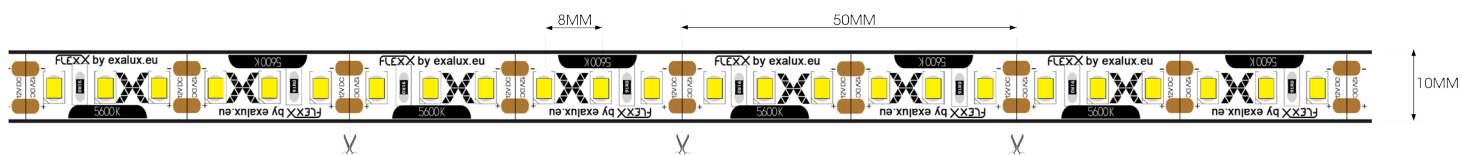
APPLICATIONS

- ▶ Decor lighting
- ▶ Calibration rooms lighting
- ▶ Frame and boxes backlighting
- ▶ Photographic reproductions lighting



GENERAL SPECIFICATIONS

Light source	LED SMD 2835
Dimensions	5000 x 10 x 1,30 MM
Cuttable sections	200 sections of 25mm
Number of LED	Section : 3 Meter : 120
Material	Polyimide + 3M 200MP Sticky Tape
Protection index	IP20
LED lifetime presumption	50 000h (LM-80-08)
Warranty	1 year

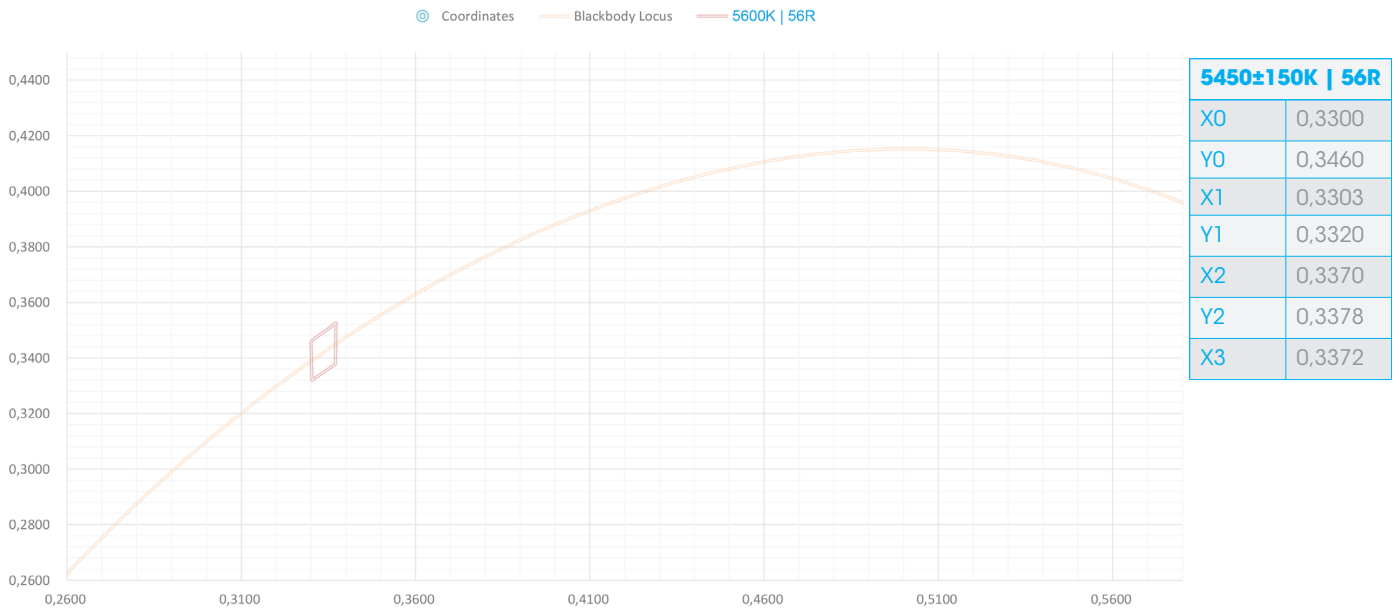
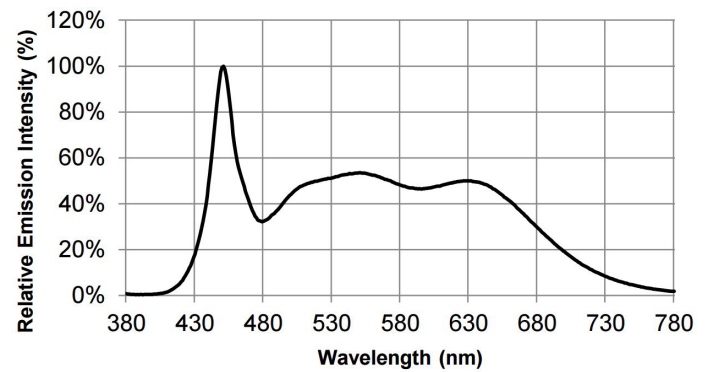


ELECTRICAL SPECIFICATIONS

Supply voltage	Min : 10 VDC TYP : 12VDC Max : 12VDC
Power consumption@12VDC, section	Min : 0,375W MAX : 0,45W
Power consumption@12VDC, meter	Min : 15W MAX : 18W
Power consumption@12VDC, reel	Min : 75W MAX : 90W

PHOTOMETRIC SPECIFICATIONS

Correlated colour temperature	5600K±300K
Colour rendering	Ra : 95-97
	R9 : 90-92
	R13 : 95-97
	R15 : 92-97
Luminous flux @12VDC, section	32,5lm ±5%
Luminous flux @12VDC, meter	1300lm ±5%
Luminous flux @12VDC, reel	6500lm ±5%
Delta u'v'	±0.003
Beam angle 2θ1/2	120°



USAGE

Operating temperature	-30°C ▶ 50°C
Heatsink	Not required in normal operating conditions
Termination	Soldering

ORDERING INFORMATION

Reference	FLX.000.007
EAN Code	3760252030435
Packaging	Cardboard box 250x250x15mm + antistatic bag
Weight	Antistatic bag : 160g Box : 230g

LEDMASTER CLASSIC



FLICKER FREE 32kHz
0 ▶ 100 %



CONSTANT VOLTAGE
12VDC ▶ 24VDC



CHANNELS
6A + 6A

LEDMASTER CLASSIC is a two-colour LED dimmer specifically designed to meet the demands of film and audiovisual electricians.



LEDMASTER CLASSIC will allow you to.

- ▶ Control your LED ribbons, bulbs, MR16, AR111 between 12VDC and 24VDC.
- ▶ Adjust precisely the CCT between «tungsten» and «daylight».
- ▶ Smoothly change the luminous intensity.
- ▶ Record shots at fast speed without flickering.

The dimmer incorporates the best of the EXALUX technology, including the high-frequency PWM driver which allows a smooth and completely «Flicker Free» dimming.

CHARACTERISTICS AND BENEFITS

- ▶ 2 independent channels
- ▶ Operating modes: two channels or Tunable White
- ▶ Totally «flicker free» due to fast frequency PWM
- ▶ Optimized dimming curve for LED sources
- ▶ Optimized curve for very low levels
- ▶ Analog potentiometers for gentle light control
- ▶ XLR 4 pin connectors
- ▶ Lock mechanism for mounting removable batteries

MAIN FEATURES

Technology	Constant voltage "low side" PWM with phase shift
Input Voltage	Min : 5 VDC Max : 24VDC
Input Current	12A max
Number of channels	2 channels
Capacity per channel	6A
PWM frequency	32kHz
Dimming range	0 .. 100%
Resolution	1500 steps
Operating modes	Tunable White (Colour / Intensity) + separate channels
Input connector	Neutrik XLR 4 pin male
Output connector	Neutrik XLR 4 pin female
Conformity	CE, RoHS
Warranty	2 years

MECHANICAL CHARACTERISTICS

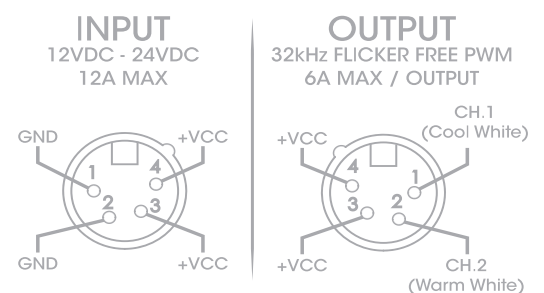
Housing	Aluminium, Epoxy powder paint with matt black finish
Dimensions	125x83x41mm
Weight	250g
IP rating	IP20
Accessories	Belt clip + V-LOCK mechanism

TERMS OF USE

Ambient temperature	-30°C ▶ +50°C
Storage Temperature	-30°C ▶ +70°C

COMMERCIAL INFORMATION

Reference	LMA.001.001
EAN code	3760252030121
Packing unit	1
Size of packaging	260x260x75MM
NET weight	423g



LEDMASTER STICK



FLICKER FREE 32kHz
0 ▶ 100 %



CONSTANT VOLTAGE
12VDC ▶ 24VDC



CHANNELS
3A + 3A

LEDMASTER STICK is an extremely compact dimmer for bicolour LED sources. It has been specifically designed to provide a powerful and practical grading solution at a very attractive price.



LEDMASTER STICK allows you to:

- ▶ Pilot your LED ribbons, bulbs, MR16, AR111 between 12VDC and 24VDC.
- ▶ Adjust precisely the CCT between «tungsten» and «daylight».
- ▶ Smoothly change the luminous intensity.
- ▶ Record shots at fast speed without flickering.

The dimmer incorporates the best of the EXALUX technology, including the high-frequency PWM driver which allows a smooth and completely «Flicker Free» dimming.

CHARACTERISTICS AND BENEFITS

- ▶ 2 independent channels
- ▶ Operating modes: two channels or Tunable White
- ▶ Totally «flicker free» due to fast frequency PWM
- ▶ PWM with phase shift to reduce current in rush
- ▶ Digital settings with TactSwitch push-button
- ▶ XLR 4 Pins connector
- ▶ Adjustment memory (colour + intensity)

MAIN FEATURES

Technology	Constant voltage «low side» PWM with phase shift
Input Voltage	Min: 5 VDC Max: 24VDC
Input Current	6A max
Number of channels	2 channels
Capacity per channel	3A
PWM frequency	32kHz
Dimming range	0 .. 100%
Resolution	1500 steps
Operating modes	Tunable White (Colour / Intensity) + separate channels
Input connector	Neutrik XLR 4 pin male
Output connector	Neutrik XLR 4 pin female
Conformity	CE, RoHS
Warranty	2 years

MECHANICAL CHARACTERISTICS

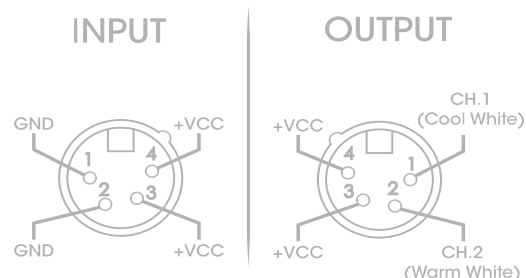
Housing	Aluminium, Epoxy powder paint with matt black finish
Dimensions	122x42x42mm
Weight	175g
IP rating	IP20
Accessories	-

TERMS OF USE

Ambient temperature	-30°C ▶ +50°C
Storage Temperature	-30°C ▶ +70°C

COMMERCIAL INFORMATION

Reference	LMA.001.002
EAN code	3760252030121
Packing unit	1
Size of packaging	140x130x55MM
NET weight	200g



LEDMASTER STUDIO4 M



DMX 512
8 bits / 16 bits



FLICKER FREE 32kHz
0 ▶ 100 %



CONSTANT VOLTAGE
12VDC ▶ 24VDC



CHANNELS
4X 7.5A

LEDMASTER STUDIO4-M is a compact and powerful dimmer designed for the implementation of RGBW LED sources on television and cinema sets.



LEDMASTER STUDIO4-M is compatible with constant voltage LED sources such as: LED ribbon (RGB, RGBW, tunable white, monochrome), MR16, AR111, etc.

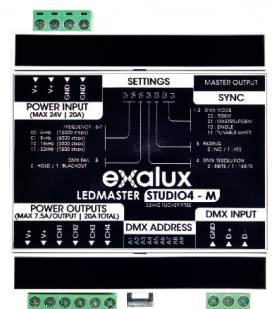
The high frequency PWM, coupled with a 32-bits control system allows to **finely grade the light intensity without any flickering**.

The operating modes help to manage RGBW or Tunable White lightings thanks to a DMX controller.

The «sync» output is used to connect the «slave» dimmer **LEDMASTER STUDIO4-S**. It makes possible to simply and inexpensively increase the number of outputs to supply large luminous surfaces or complex multi-point lightings.

CHARACTERISTICS AND BENEFITS

- ▶ 4 independant channels 7,5A
- ▶ PWM frequency with adaptive parameter from 4kHz to 32kHz
- ▶ Operating modes: RGB, RGBW, tunable white, «all together»
- ▶ 8 or 16 bits DMX mode for unmatched fine tuning
- ▶ Tuning of the transition delay by a specific DMX channel
- ▶ Optimized dimming curve for LED sources
- ▶ Removable connectors for an easy installation



MAIN FEATURES

Technology	Constant voltage Low side PWM with phase shift
Input voltage	Min : 5 VDC Max : 24VDC
Input current	20A max
Number of channels	4 channels
Capacity per channel	7.5A
PWM Frequency	4kHz 8kHz 16kHz 32kHz
Dimming range	0 .. 100%
Resolution	@ 4kHz : 12 000 steps @ 8kHz : 6 000 steps @ 16kHz : 3 000 steps @ 32kHz : 1 500 steps
DMX mode	8 bits / 16 bits
DMX fail mode	Back up on the last setting or black out
DMX control mode	RGBW RGBW + Master Tunable White (Colour / Intensity) «All together»
Input connector	Power supply: 4 pins terminal block, Steps: 5.08 DMX: pins terminal block, Steps: 5.08
Output connector	PWM: 6 pins, Steps: 5.08 PWM Sync: RJ45
Conformity	CE, RoHS
Warranty	2 years

MECHANICAL CHARACTERISTICS

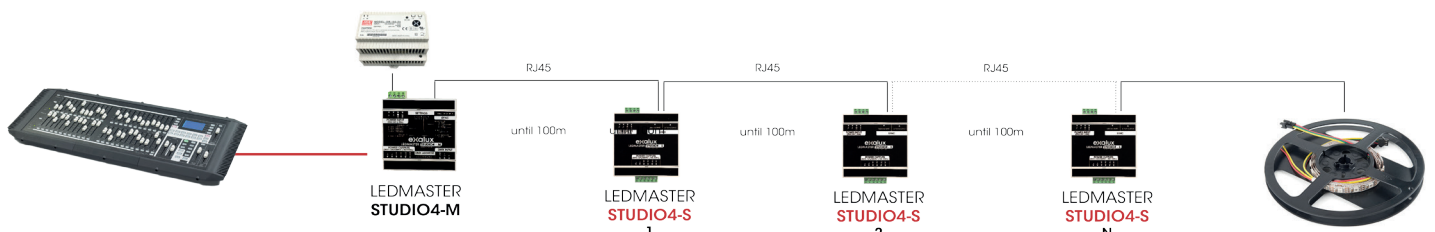
Housing	ABS/PC UL94-40-V0 self-extinguishing
Dimensions	90x88x32,2MM
Weight	121g
IP rating	IP20
Accessories	Supplied with removable female connectors

TERMS OF USE

Ambient temperature	-30°C ▶ +50°C
Storage temperature	-30°C ▶ +70°C

COMMERCIAL INFORMATION

Reference	LMA.001.003
EAN Code	3760252030145
Packing unit	1
Size of packaging	260x260x75MM
Net weight	190g



LEDMASTER • STUDIO4 S



FLICKER FREE 32kHz
0 ▶ 100 %



CONSTANT VOLTAGE
12VDC ▶ 24VDC



CHANNELS
4X 7.5A

LEDMASTER STUDIO4-S is a slave dimmer designed for the implementation of RGBW LED on television and cinema sets. It works in conjunction with the **LEDMASTER STUDIO4-M** to which it is synchronized

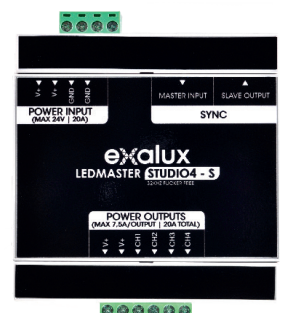


LEDMASTER STUDIO4-S is compatible with constant voltage LED sources such as: LED ribbon (RGB, RGBW, tunable white, monochrome), MR16, AR111, etc.

The «Master Input» allows it to be synchronized to a LEDMASTER STUDIO4-M (DMX-controlled) up to a distance of 100 meters via a standard CAT5e Ethernet cable. The «Slave Output» allows to connect another LEDMASTER STUDIO4-S in Daisy Chain. With this device, it is possible to simply and inexpensively increase the number of outputs for controlling large light surfaces or complex multi-point lightings.

CHARACTERISTICS AND BENEFITS

- ▶ 4 independant channels 7,5A
- ▶ Synchronized operation on a master LEDMASTER studio
- ▶ Compatible with PWM frequency up to 32kHz
- ▶ Wide power supply range
- ▶ Removable connectors for an easy installation



MAIN FEATURES

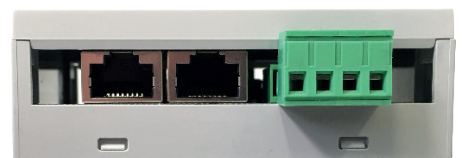
Technology	Constant voltage Low side PWM with phase shift
Input voltage	Min: 5 VDC Max: 24VDC
Input current	20A max
Number of channels	4 channels
Capacity per channel	7.5A
PWM Frequency	4kHz 8kHz 16kHz 32kHz (Depending on the settings of the master)
Dimming range	0 .. 100%
Distance between master and slave	Up to 100m
Sync In / Out	RS485 (± 15 kV HBM protection)
Input Sync	
Input connector	3 pins terminal block, step 5.08
Input Sync connector	RJ45
Output WPM connector	6 pins terminal block, step 5.08
Output Sync connector	RJ45
Conformity	CE, RoHS
Warranty	2 years

MECHANICAL CHARACTERISTICS

Housing	ABS/PC UL94-40-V0 self-extinguishing
Dimensions	90x88x32,2MM
Weight	100g
IP rating	IP20
Accessories	Supplied with removable female connectors

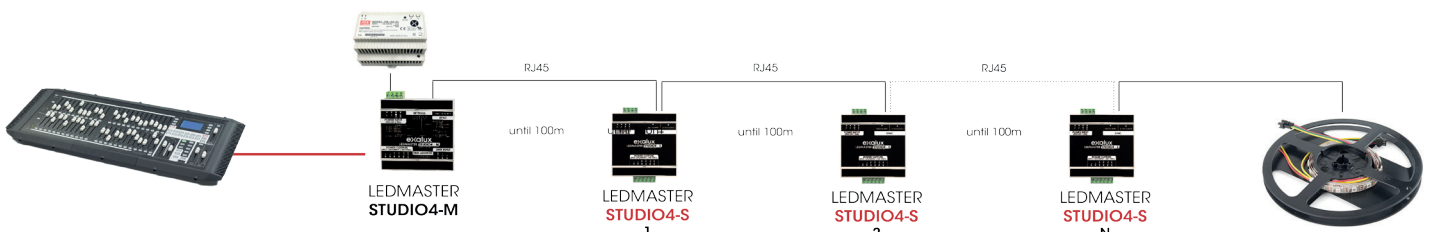
TERMS OF USE

Ambient temperature	-30°C ▶ +50°C
Storage temperature	-30°C ▶ +70°C



COMMERCIAL INFORMATION

Reference	LMA.001.004
EAN Code	3760252030152
Packing unit	1
Size of packaging	260x260x75MM
Net weight	175g



EXALUX uBOOST • DC24W108



STEP-UP CONVERTER
▶ 24VDC



POWER
108W



HIGH EFFICIENCY
98%

uBOOST DC24W408 is a voltage step-up converter, used to generate a 24VDC constant voltage from an input voltage between 12 and 20VDC. uBOOST can for instance be used to power 24VDC LED ribbon from a V-LOCK battery.

SPECIFICATIONS & ADVANTAGES

- ▶ Constant voltage step-up converter
- ▶ Low temperature increase thanks to a very high efficiency
- ▶ Compatible with V-LOCK batteries
- ▶ Short-circuit protection

APPLICATIONS

- ▶ Power 24VDC LED sources from a battery pack
- ▶ Power electronic appliances up to 100W



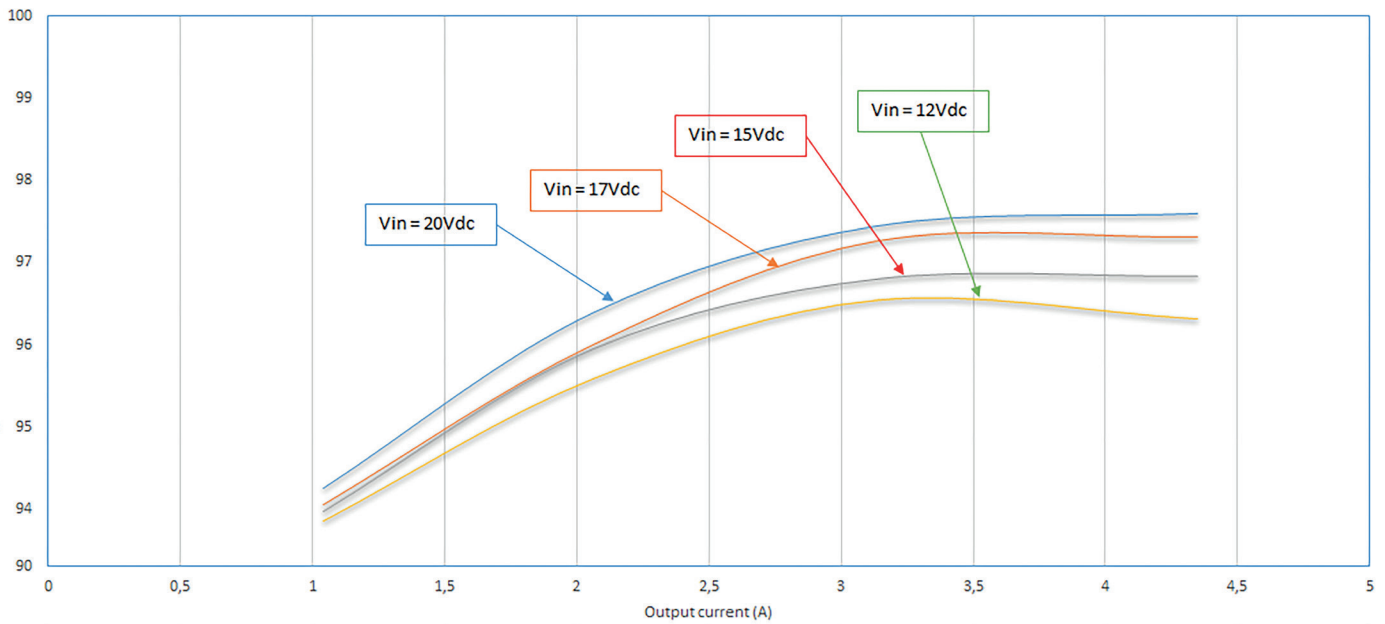
ELECTRICAL SPECIFICATIONS

Input voltage	Min : 12 VDC Max : 20VDC
Output voltage	24VDC
Input current	MAX : 4.5A
Output current	4.5A max
Electric power	108W max

GENERAL SPECIFICATIONS

Technology	Synchronous switching step-up converter
Switching frequency	Max : 1MHz
Efficiency	Min: 93% TYP: 96% Max: 98 %
Thermal protection	165°C
Internal protection	10,5A Fuse
Input	Neutrik XLR 4 Male on flexible cable
	1-2 : GND 3-4 : Vin
Output	Neutrik XLR 4 Female on flexible cable
	1-2 : GND 3-4 : +24VDC
Housing	ABS Black
Dimensions	100,90 x 51,40 x 25 MM
IP rating	IP20
Warranty	2 years
Certifications	CE, RoHS

EFFICIENCY



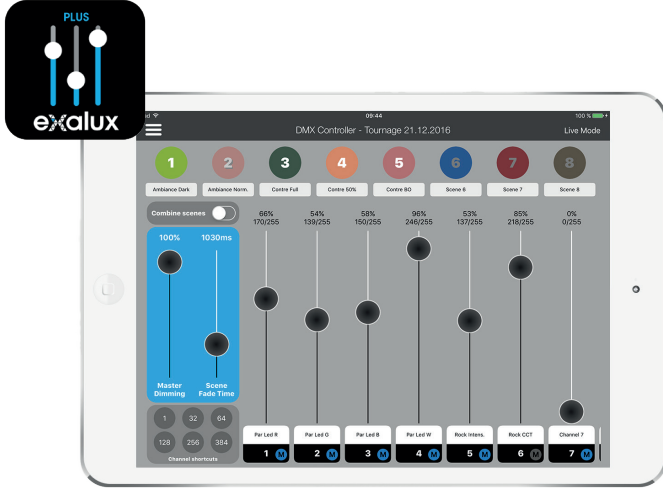
TERMS OF USE

Operating temperature	-20°C ▶ +50°C
Storage temperature	-20°C ▶ +70°C

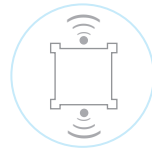
ORDERING INFORMATION

Reference	PWR.024.001
EAN Code	3760252030596
Packaging	cardboard box
Weight	420 g

DMX CONNECT PLUS



DMX CONTROL ON TABLET
Wi-Fi ▶ Art-Net



PROTOCOL
Wi-Fi / Art-Net



OPERATING SYSTEM
iOS | Android

DMX CONNECT PLUS is a virtual DMX console that allows remote control of all types of DMX devices from an iOS or Android tablet.

DMX CONNECT PLUS is most certainly the simplest of DMX control applications. It is user friendly, simple, fast and intuitive.

Used with the **CONNECT-One** device, the application is completely «plug & play» and does not require any special setting to operate.

DMX CONNECT PLUS simplifies the implementation of your DMX devices, saves you time and gives you greater freedom of action.

APPLICATIONS

▶ Wireless control of DMX devices from an iOS or Android application



Connect-One



HMI



Stager



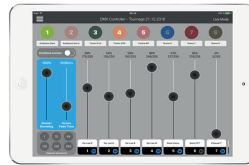
LED panel



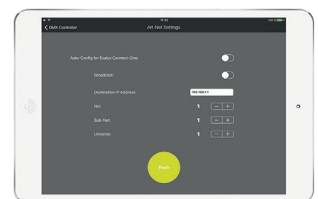
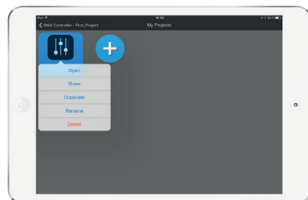
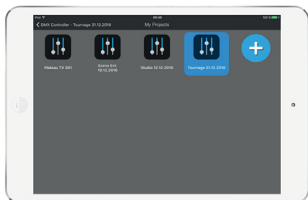
Fog Machine

CHARACTERISTICS AND BENEFITS

- ▶ Virtual professional DMX controller for tablet
- ▶ 512 channels
- ▶ 16 memories
- ▶ Supported Protocols: Wi-Fi / Art-net / DMX
- ▶ Compatible with iOS and Android
- ▶ Mode «Console» / mode «Live»
- ▶ Fader individually masterisable
- ▶ Configurable crossfade
- ▶ Project Manager
- ▶ Projects sharing via iCloud
- ▶ Projects sharing via AirDrop
- ▶ Settings lockable with password
- ▶ Ability to combine multiple scenes
- ▶ Online Tutorial (French)
- ▶ Compatible with all Art-Net / DMX gateways
- ▶ Ideal for DMX control on small TV or cinema sets



Wi-Fi



CONNECT ONE



WIRELESS GATEWAY
Wi-Fi ▶ Art-Net ▶ DMX



DMX
1 univers

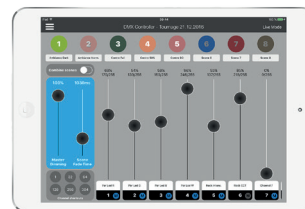


TECHNOLOGY
Wi-Fi 2,4GHz

CONNECT ONE is a box which creates its own Wi-Fi network and which enables you to control any DMX devices with an iPad, iPhone and most of the Android Tablets and smartphones.

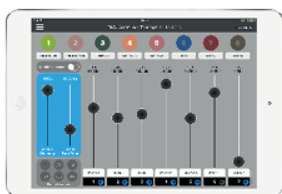
CONNECT ONE is «plug and play» and does not require any special setting.

CONNECT ONE simplifies the DMX devices installations, then you will save time and benefit of more freedom in action.



USE CASES

▶ Control all your DMX devices with DMX Control Plus or Luminair Apps



Connect-One



HMI



Stager



LED panel



Fog Machine

AT A GLANCE...

- ▶ Wi-Fi/Art-Net/DMX Node
- ▶ Embedded Wi-Fi access point
- ▶ Embedded web server allows setting up
- ▶ Up to 8 hours running time with the EXALUX 8.14Wh Power Bank
- ▶ 2 power source input (mains/battery)
- ▶ Up to 100m connection range
- ▶ Compatible with Art-Net applications EXALUX DMX CONNECT and Luminair

MAIN FEATURES

Standards	Wi-Fi Art-Net DMX
Compatible devices	Smartphone and tablet, iOS & Android
Running time on battery	Up to 8 hours with the external 8,14Wh EXALUX Power Bank
Housing	Aluminium
Dimensions & Weight	141 x 144 x 43mm 500g
Rating protection	IP20
Approvals	CE, RoHS
Warranty	2 years

WLAN INTERFACE

Standard	IEEE 802.11g
Frequency range	2.4 ~ 2.4835 GHz (US/Canada/Europe)
Antenna connector	RP-SMA (femelle)
TX transmit Power	17,5 dB
RX sensivity	-98,5 dB
Indicator	WLAN connection

DMX INTERFACE

Input data	Art-Net via Wi-Fi
Output	DMX 512 (1 univers)
Galvanic Isolation	Yes
Output connector	NEUTRIK XLR-5 Female
Indicator	Art-Net data

ELECTRICALS FEATURES

DC input	Min : 5 VDC Max : 24VDC
DC input connector	NEUTRIK XLR-4 Male
AC input	100-240VAC
AC input connector	NEUTRIK PowerCON
Power consumption	Max : 1W

TERMS OF USE

Ambiant temperature	-20°C ▶ +50°C
Storage temperature	-20°C ▶ +70°C

ORDERING INFORMATION

Item	BASIC : CNT.000.001 STARTER : CNT.000.002
EAN Code	3760252030190 3760252030206
Packaging	Cardboard box Case
Weight	800g 1350g

CONNECT • TX100



RF TRANSCEIVER
Up to 500m



DMX
1 universe



TECHNOLOGY
2,4GHz CRMX



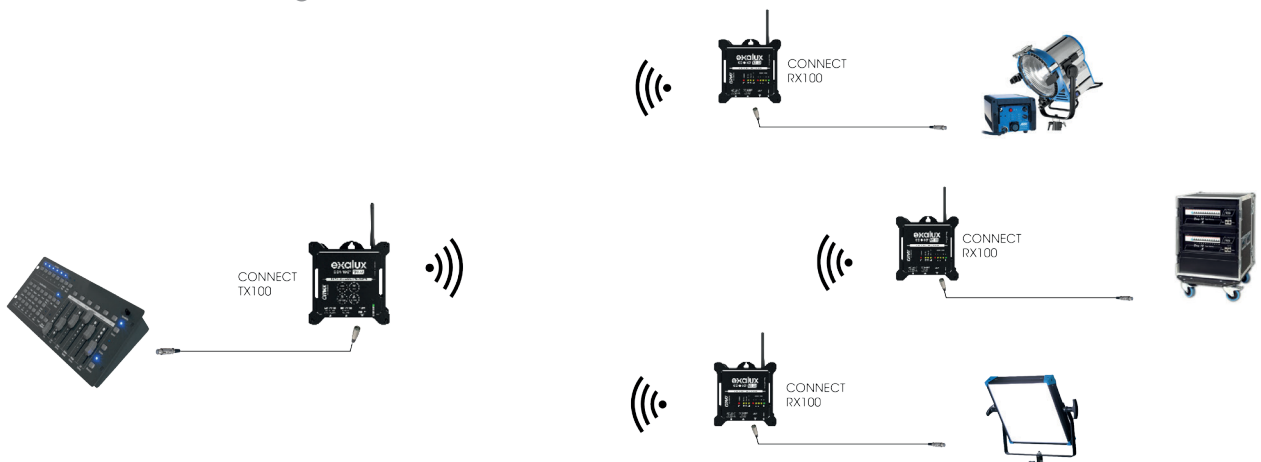
CONNECT TX100 is a radio DMX transmitter that uses LumenRadio's CRMX technology. **CONNECT TX100** can transmit a whole 512-channel DMX universe over long distances, with a high refreshing rate.

Several **CONNECT TX100** can be used simultaneously in order to transmit several DMX universes.

CONNECT TX100 simplifies the installation of DMX fixtures, reduces time consumption and offers more flexibility when it comes to frequently changing setups. **CONNECT TX100** is also suited for permanent setup installations up to 1500 m², using several **CONNECT RX100** receivers.

APPLICATIONS

- ▶ Wireless control of DMX fixtures, with a standard DMX controller
- ▶ Remote control in moving vehicles



SPECIFICATIONS & BENEFITS

- ▶ Create long range wireless DMX installations, with very high reliability
- ▶ No latency, instantaneous response
- ▶ Several transmitters can be used simultaneously without any interferences
- ▶ Up to 8 hours battery life with a 8.14Wh Power Bank (optional)
- ▶ Mains or battery operation (hot swap possible)
- ▶ Up to 500m range in urban areas (up to 1000m free field)
- ▶ No configuration required

GENERAL SPECIFICATIONS

Protocol	DMX-512 (1986 & 1990), DMX512-A
Input	Standard DMX controller
Battery life	Up to 8 hours with EXALUX Power Bank 8.14Wh
Construction	Aluminium
Dimensions & weight	141 x 144 x 43mm 360g
Protection index	IP20
Certification	CE, RoHS
Waranty	2 years

RADIO INTERFACE

Standard	CRMX LumenRadio
Frequency	2,402 ~ 2,480 GHz
Antenna connector	RP-SMA (female)
RF output	20 dBm (100mW)
RF modulation	GFSK
Range	Up to 500m

DMX INTERFACE

Input	NEUTRIK XLR-5 Male
Galvanic insulation	-
Number of DMX universe	1 (512 channels)
DMX frame rate	0,8-7352 Hz
End to end latency	< 5ms

ELECTRICAL SPECIFICATIONS

DC input voltage	Min : 5 VDC Max : 24VDC
DC input connector	NEUTRIK XLR-4 Male
AC input voltage	100-240VAC
AC input connector	NEUTRIK PowerCON
Power consumption	Max : 1,5W

USAGE

Operating temperature	-20°C ▶ +50°C
Storage temperature	-20°C ▶ +70°C

ORDERING INFORMATION

Reference	CNT.000.003
EAN Code	3760252030503
Packaging	Cardboard box
Weight	800g

CONNECT • RX100



RF RECEIVER
Up to 500m



DMX512
1 universe



TECHNOLOGY
2,4GHz CRMX

CONNECT RX100 is a radio DMX receiver, that uses LumenRadio's CRMX technology. **CONNECT RX100** can receive a whole 512-channel DMX universe over long distances, with a high refreshing rate.

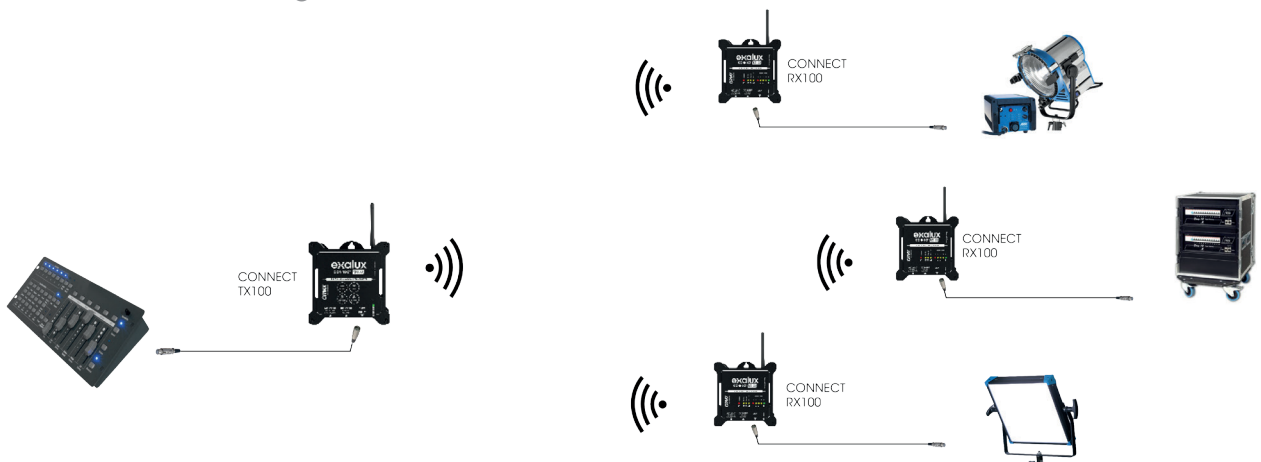


Several **CONNECT RX100** can be used simultaneously, synchronized to a single **CONNECT TX100**, in order to control several DMX fixtures.

CONNECT RX100 simplifies the installation of DMX fixtures, reduces time consumption and offers more flexibility when it comes to frequently changing setups. **CONNECT RX100** is also suited for permanent setup installations up to 1500 m².

APPLICATIONS

- ▶ Wireless control of DMX fixtures, with a standard DMX controller
- ▶ Remote control in moving vehicles



SPECIFICATIONS & ADVANTAGES

- ▶ Create long range wireless DMX installations, with very high reliability
- ▶ No latency, instantaneous response
- ▶ Several transmitters can be used simultaneously without any interferences
- ▶ Up to 15 hours battery life with a 8.14Wh Power Bank (optional)
- ▶ Mains or battery operation (hot swap possible)
- ▶ Up to 500m range in urban areas (up to 1000m free field)
- ▶ No configuration required

GENERAL SPECIFICATIONS

Protocol	DMX-512 (1986 & 1990), DMX512-A
Input	Standard DMX controller
Battery life	Up to 15 hours with EXALUX Power Bank 8.14Wh
Construction	Aluminium
Dimensions & weight	141 x 144 x 43mm 360g
Protection index	IP20
Certification	CE, RoHS
Waranty	2 years

RADIO INTERFACE

Standard	CRMX LumenRadio
Frequency	2,402 ~ 2,480 GHz
Antenna connector	RP-SMA (female)
RF output	20 dBm (100mW)
RF modulation	GFSK
Range	Up to 500m

DMX INTERFACE

Input	NEUTRIK XLR-5 Female
Galvanic insulation	-
Number of DMX universe	1 (512 channels)
DMX frame rate	0,8-7352 Hz
End to end latency	< 5ms

ELECTRICAL SPECIFICATIONS

DC input voltage	Min : 5 VDC Max : 24VDC
DC input connector	NEUTRIK XLR-4 Male
AC input voltage	100-240VAC
AC input connector	NEUTRIK PowerCON
Power consumption	Max : 0,6W

USAGE

Operating temperature	-20°C ▶ +50°C
Storage temperature	-20°C ▶ +70°C

ORDERING INFORMATION

Reference	CNT.000.004
EAN Code	3760252030510
Packaging	Cardboard box
Weight	800g

"A beautiful image always starts with
a beautiful light"



At EXALUX, we create high-performance lighting and remote control solutions for audiovisual and cinema..

We believe that it is essential that you benefit from the latest technological advances so that you can simply create complex lighting in all circumstances.

THE EXALUX COMMITMENT

We design and manufacture our own products, enabling us to monitor the value chain and thus guarantee its quality.

PERFORMANCE TO MEET YOUR NEEDS

Our engineers develop powerful technologies and user friendly products that are easy to transport and energy-efficient.

Our goals: to make your work easier and to save you time.



Innovation



User friendly



French touch



Eco-efficiency

exalux