

# DMXPen Live – PenSuite controlled DMX recording quick manual

## DMX REC Mode

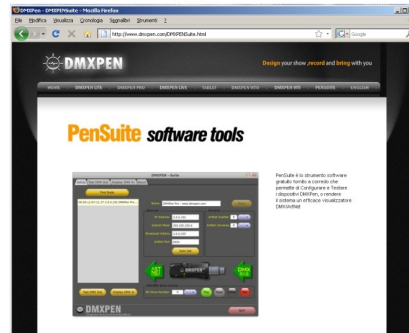
DMXPen is able to record both DMX and ArtNet signals. The next steps will show how to select the DMX recording mode



DMX Recording

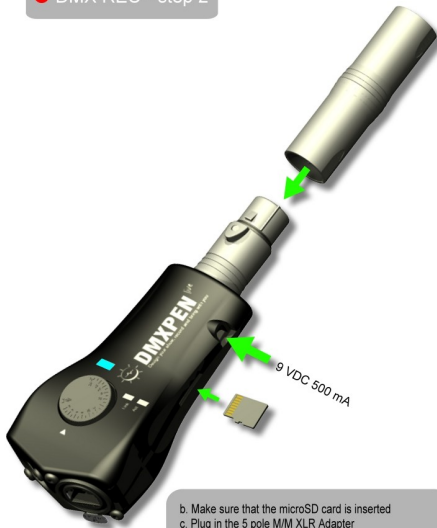
## DMX REC - Step 1

The DMXPen Live operating mode can be also selected using the PenSuite free software provided on the microSD card or downloadable from the [www.dmxpen.com](http://www.dmxpen.com) web site



a. Copy/Download and install PenSuite on your PC/MAC

## DMX REC - step 2

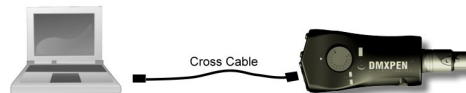


b. Make sure that the microSD card is inserted  
c. Plug in the 5 pole M/M XLR Adapter  
d. Supply the DMXPEN  
e. Make sure that the multifunction led light sky blue otherwise the direction can be changed from PenSuite

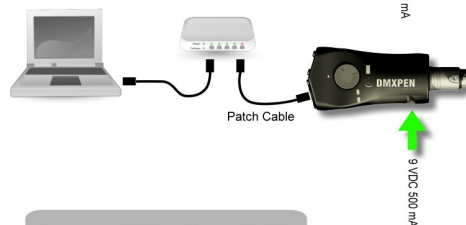
## DMX REC - Step 3

The DMXPen Live to PC/MAC connection is possible through the ethernet port and can be established in 2 different mode

1. Cross cable direct connection



2. Connection through HUB or Switch



f. Connect DMXPen Live to PC/MAC

## DMX REC - Step 4

Start PenSuite and remember that FireWall and similar network protection systems can limit the correct operation.



g. Launch PenSuite

## DMX REC - Step 5

1. Press "Find Node" to scan the network looking for all the connected DMXPen  
2. Select the desired DMXPen from the list  
3. Click on the DMXPen image to select the correct data direction and make sure that the multifunction led on the DMXPen Live, light sky blue.



h. DMXPen detection and mode selection

# DMXPEN Live – PenSuite controlled DMX recording quick manual

## DMX REC - step 6



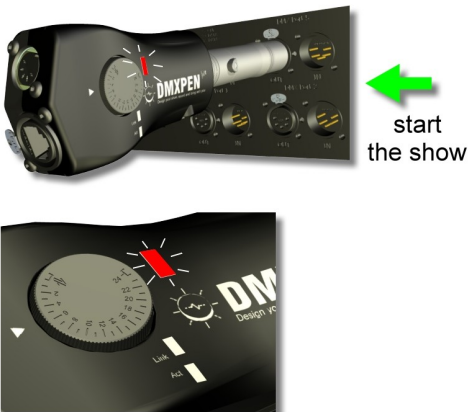
- i. Plug in the DMXPEN provided with the adapter on the DMX generator output port. The multifunction led will blink sky blue to display the correct DMX receiving

## DMX REC - step 7



- l. Select the show number and click the REC button on the "DMXPEN Show Control" section

## DMX REC - step 8



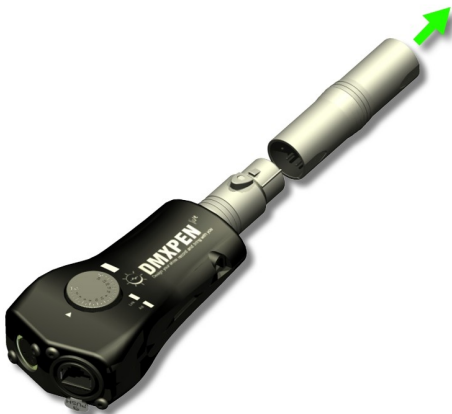
- m. The multifunction led will blink red to display the record in progress state
- n. Start the show playback on the DMX generator device

## DMX REC - step 9



- o. click on the STOP button to stop the recording. The multifunction led will light sky blue (standby state)

## DMX REC - step 10



- p. Unplug the DMXPEN
- q. Unplug the XLP adapter