

DMXPen Live – PenSuite controlled ArtNet recording quick manual

ArtNet REC Mode

DMXPen is able to record both DMX and ArtNet signals. The next steps will show how to select the ArtNet recording mode

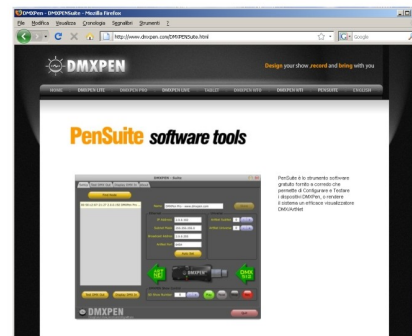


ArtNet Recording

ArtNet REC - Step 1

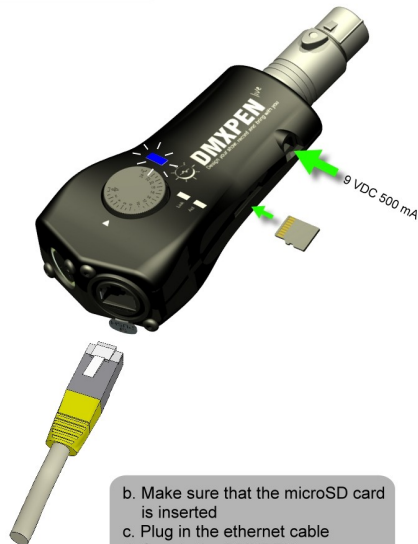
The DMXPen Live operating mode can be also selected using the PenSuite free software provided on the microSD card or downloadable from the www.dmxpen.com web site

N.B. Before selecting a new mode, Stop any running playback pressing the DMXPEN selector



a. Copy/Download and install PenSuite on your PC/MAC

ArtNet REC - step 2

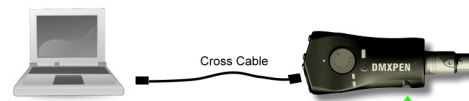


b. Make sure that the microSD card is inserted
c. Plug in the ethernet cable
d. Supply the DMXPEN

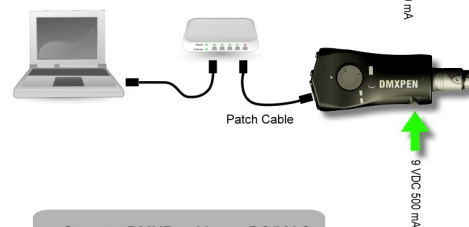
ArtNet REC - Step 3

The DMXPen Live to PC/MAC connection is possible through the ethernet port and can be established in 2 different mode

1. Cross cable direct connection



2. Connection through HUB or Switch



e. Connect DMXPen Live to PC/MAC

ArtNet REC - Step 4

Start PenSuite and remember that FireWall and similar network protection systems can limit the correct operation.



f. Launch PenSuite

ArtNet REC - Step 5

1. Press "Find Node" to scan the network looking for all the connected DMXPen
2. Select the desired DMXPen from the list
3. Click on the DMXPen image to select the correct data direction and make sure that the multifunction led on the DMXPen Live, light blue.



g. DMXPen detection and mode selection

DMXPen Live – PenSuite controlled ArtNet recording quick manual

ArteNet REC - step 6



h. Select the show number and click the REC button on the "DMXPEN Show Control" section



ArtNet REC - step 7



i. Click on the "Test DMX Out" button to use PenSuite as ArtNet generator and click to "ArtNet Enable" button to activate the transmission
 j. Now you can use the PenSuite as a light desk moving sliders or running cues.

ArtNet REC - step 8



m. click on the STOP button to stop the recording. The multifunction led will light blue (standby state)

