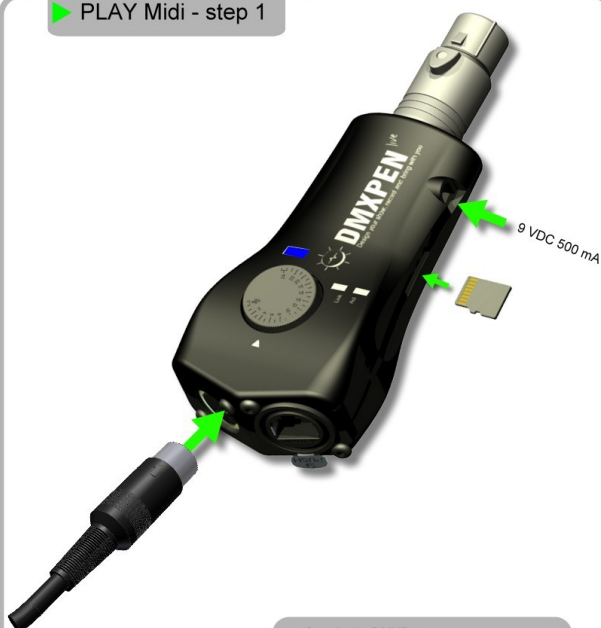


DMXPen Live – MIDI controlled DMX playback quick manual

▶ PLAY Midi - step 1



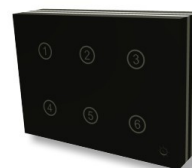
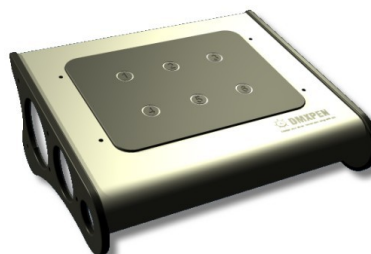
- Supply the DMXPen
- On playback, DMX Port will be placed in output automatically and both DMX and Artnet signal will be generated
- Plug in the MIDI cable

▶ PLAY Midi - step 2



- Plug in the DMXPen on the lamp DMX In connector or on the DMX plant start line

▶ PLAY Midi - step 3



- From the MIDI controller, select the MIDI preset associated to the show number. DMXPen WT1 and WTO can be also used as MIDI controller

- multifunction led blink green on show present
- multifunction led blink red for a few seconds when the show is not present