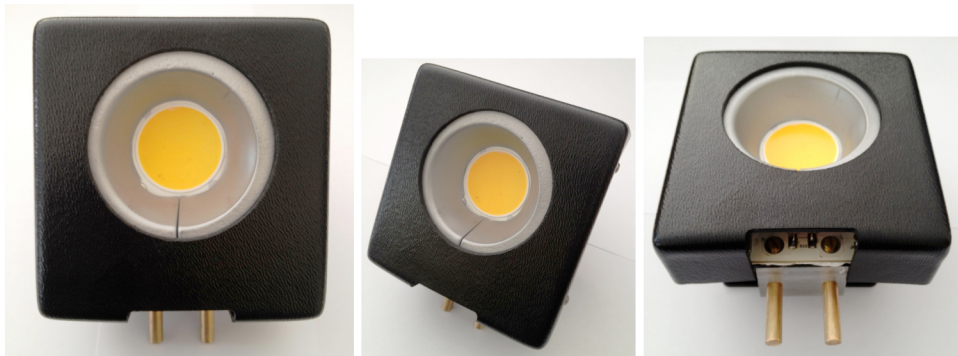




EVOLIGHT PLUS:

Foreword:

The Evolved LED module retrofits and supplants tungsten lamps which wattage is of 1000W traditionally used for studio luminaries in theatres, TV-Studios, and other entertainment venues. Evolved is a LED-based lamp with the option of three distinct colour temperatures: 3200°K, 4000°K and 5600°K ; Evolved's high-power LED matches the output of traditional tungsten lamp sources and saves you money in lamp replacements, energy, and heat.



Specifications:

- Luminous flux equivalent to 1000W tungsten lamp
- Perfectly retrofits G22 Fresnel luminaries of 1000W
- Perfect 3200°K, 4000°K, 5600°K Colour temperature Flawless °K grade variation at any dimming point
- Seamless focus parity across the light spectrum compared to tungsten sources
- Significant energy savings compared to tungsten (1/10 of 1000W tungsten)
- Substantial heat reduction of up to 150°C
- Average EvolvedPlus lamp life rated 50,000 hours (tungsten lamps: 250 Hour)
- Triak and/or IGBT dimming option
- Flicker-free operation ideal for video, TV, and stage applications
- EvolvedPlus perfectly fits all G22 lamp-bases
- Efficient 0-100% inductive/resistivity dimming system
- Silent cooling fan with speed adjustment
- Protection-sensor to ensure LED never surpasses 85°C
- SMD PCB for maximum electronic efficiency and minimal static electricity
- **Photos and drawings might slightly differ from actual product.**
- **Texts photos and specifications may be changed without notice- All rights reserved.**

EvolvedPlus is covered by Evolight's Patent