

BROTHER, BROTHER & SONS

presents

FORCE V



Creative force

LED CONTROL TECHNOLOGY FROM BROTHER, BROTHER & SONS

WWW.BROTHERS-SONS.DK



FORCE V



A complete LED Light Engine back part for third part optics

The Force V from Brother, Brother & Sons is the most powerful LED 'FORCE' ever. A complete LED Light Engine back part for third part optics that sets new standards for white light LED but still with a very low power consumption.

Force V has been defined and developed on request by users and actually in stock since 1999 when BB&S built the first prototype, awaiting the technology of LEDs to reach the desired output level. Now it's time!

Flicker-free 'smoother than ever' dimming

With Force V you can forget all dimmer scepticism. The dimming is smooth as silk and 100 % flicker-free.

From tungsten to LED in a minute

In order to achieve efficient lighting management, users specifically requested the change-in-a-minute feature. Here you are – it's never been easier!

Cool down – the heat is off

You can stop pitying TV hosts. They've had a hard time because up to 85% of tungsten energy is dismissed as heat. Now those days are over – and without compromising on lighting performance.

Low maintenance and power consumption

The Force V suits your creative ideas while making the best possible use of energy – both yours and that of our planet.

Force V is available in two colour temperatures comparable to tungsten 3200 kelvin and discharge 5600 kelvin.

**"The value of an idea
lies in the using of it."**

Thomas Edison



- From tungsten to LED in a minute
- Very powerful 'FORCE'
- Totally smooth theatrical type dimming
- Flicker-free dimming (can be used for high speed video lighting)
- Excellent shadow rendering
- Crisp Gobo projection
- Straight cuts with beam shapers
- Super fast strobe speed and duration
- Silent operation
- Long filter life
- Internal dimmer controlled by DMX 512
- RDM ready
- Power-saving long LED life
- High reliability using BB&S proven technology
- Very little maintenance required over time
- Reduced CO2 emission = smaller carbon footprint for your business

POWER:

Switchmode power supply
AC Power: 100 – 240 V nominal, 50/60 Hz
Max. power consumption: 110 W.
1 Amp @ 110V / 0,5 Amp @ 240V
Powercon IN and OUT for daisy chaining

LAMP:

High quality 5600 LED array, CRI min. 72
High quality 3200 LED array, CRI min. 80

CONTROL:

DMX512



*Dimensions are dependent of lens type.
Example shows a 19° / 26° / 36° / 50° configuration
Additional weight when mounted: 2,95 kg / 6,5 lbs*

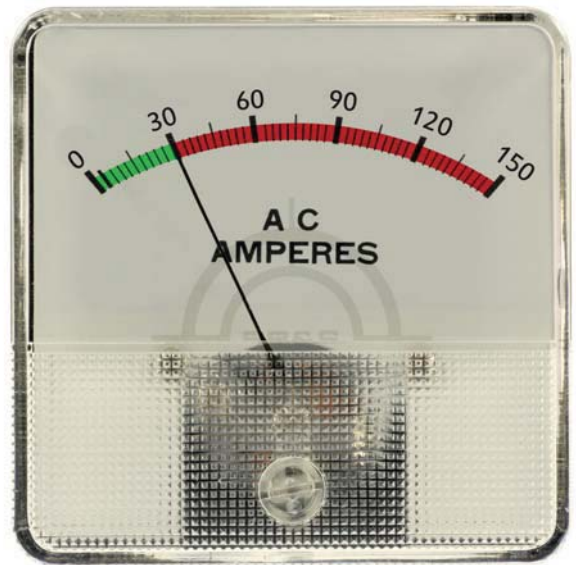
Where to use Force V

- Broadcast studios
- Film and video production
- Theatres
- Concerts
- Display lighting
- Museums
- Photo shoots
- Churches
- Science centres
- Exhibitions
- Trades
- Fashion shows
- Events
- Venues
- On location

keep it green



before



after

Founded in 1999 and headquartered in Copenhagen, Denmark, Brother, Brother & Sons specify, develop, produce and manufacture high-end LED lighting for the entertainment business around the world.

We work closely with an international network of distributors and are represented in the following countries: Canada, Denmark, Finland France, Germany, Holland, Japan, Switzerland, South America and USA.

For more information please visit www.brothers-sons.dk

MADE IN DENMARK FOR LIGHTING PEOPLE BY LIGHTING PEOPLE



WWW.BROTHERS-SONS.DK

TEL.:+45 70 27 42 41 - MAIL: BROTHERS@BROTHERS-SONS.DK