



Battery-powered LED panel for film, studio and stage usage. Included with HydraPanel are six light modifiers such as Filters, EggCrates and GelHolder. HydraPanel can be mounted with its FlexBase accessory, Babypin and backside magnet. Via ConnectorPlate four panels can be connected to form a bigger panel. For longer installations it can be wired with power and data through an Astera PowerBox.

## SPECIFICATIONS



Max 20h



Wireless DMX



IP65



App

Order Code	FP6
LED Engine	Titan LED Engine
Colors	RGBMintAmber
Total LED Power	25 W
LED Power Draw	17 W
Luminous Flux 3200K	1102 Lumens
Luminous Flux 4000K	1287 Lumens
Luminous Flux 5500K	1298 Lumens
Light Output 3200 K @ 1m	443 Lux
Light Output 4000 K @ 1m	512 Lux
Light Output 5500 K @ 1m	516 Lux
CRI (Ra)/ TLCI 3200- 6500 K*	≥ 96
Beam Angle	110° x 100°
Field Angle	150° x 145°
Strobe	0 - 25 Hz
Pixels	6
Battery Runtime	up to 20 hours
Battery Runtime Max Brightness	1h 45m
Battery Lifetime	70 % after 300 cycles
Charging Time (nominal)	3 hours
DC Input	24VDC - 0.85 A
DC Connector	5,5 mm x 2,1 mm
Wired DMX	Yes Via FP1-PWB/FP3-DTL/PWB2-86
CRMX Receiver	Built-in
BluetoothBridge BTB	Built-in
Wireless Protocols	CRMX, UHF, Bluetooth, WiFi
Wireless Range	CRMX/UHF Up to 300 m / 330 yds Bluetooth Up to 3 m / 3.3 yds
Infrared Control	Yes
ControlSync	Yes
TouchSlider	Yes
Housing Material	Polymer & Metal
IP Rating	IP65
Ambient Operating Temperature	0 - 40 °C / 32 - 104 °F
Weight	604 g / 1.3 lb
Dimensions L x W x D	166 mm x 85 mm x 43,5 mm / 6.53" x 3.34" x 1.71"

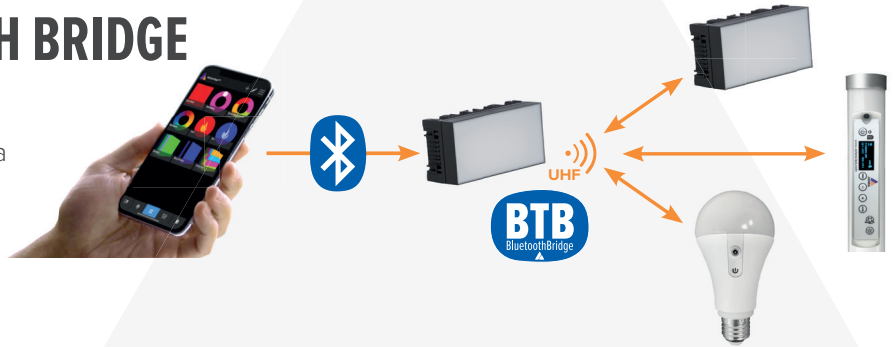
# RF CHARACTERISTICS

Wireless Modules	EU: UHF (863-870MHz)	USA: UHF (917-922.20MHz)	AUS: UHF (922.30-927.50MHz)	SGP: UHF (920.50-924.50MHz)
Modulation	FHSS	FHSS	FHSS	FHSS
ERP (Transmitter)	<25mW	<25mW	<25mW	<25mW
Channel Count	47	53	53	41

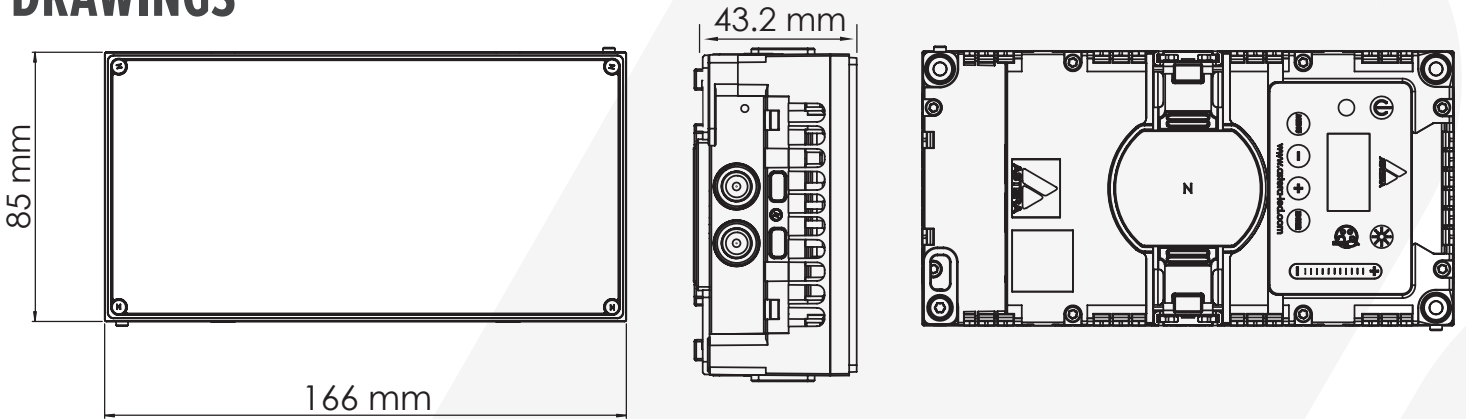
Wireless Modules	KOR: UHF (917.9-921.5MHz)	RUS: UHF (868.75-869.12MHz)	JPN: UHF (922.80-926.40MHz)	CRMX (2402-2480MHz)	Bluetooth 5.0 LE (2402-2480MHz)
Modulation	FHSS	FHSS	FHSS	FHSS	FHSS
ERP (Transmitter)	<25mW	<25mW	<25mW	-	10mW (BLE)
Channel Count	10	6	19	79	40

## HYDRAPANEL AS BLUETOOTH BRIDGE

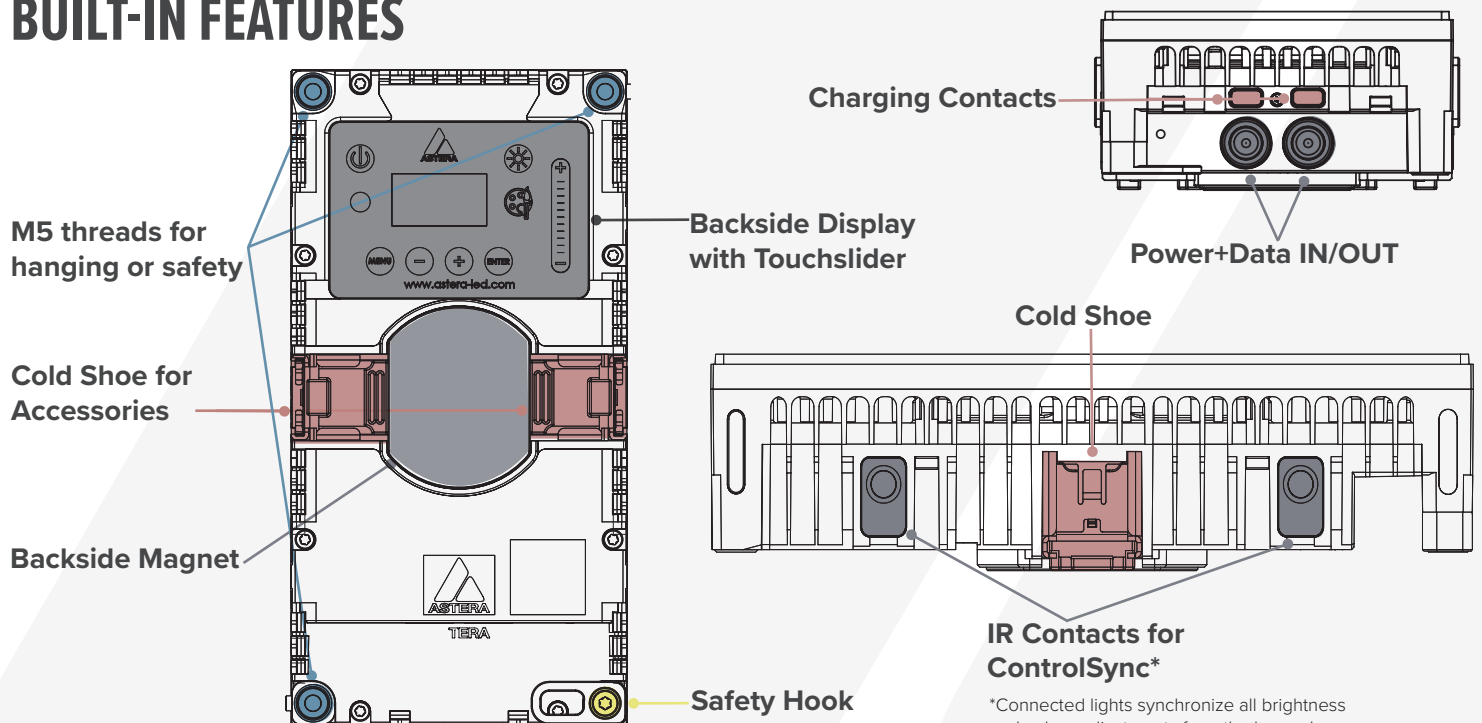
Connect directly to a HydraPanel via Bluetooth. This master light will revert AsteraApp commands to all other HydraPanels and other Astera lights via UHF band.



## DRAWINGS



## BUILT-IN FEATURES



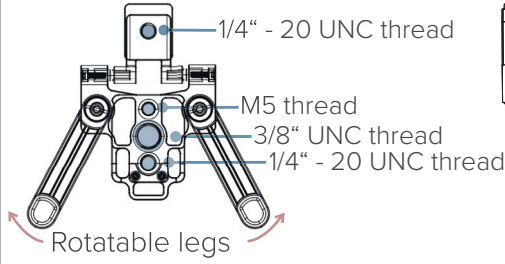
\*Connected lights synchronize all brightness and colour adjustments from the keypad.

# ACCESSORIES

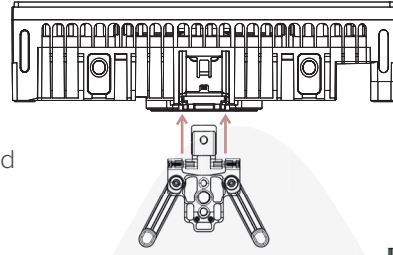
**FlexBase**  
FP6-FB



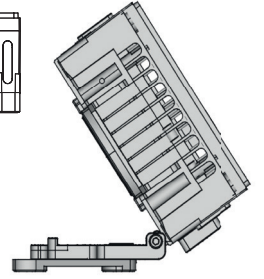
**Mounting points**



**Slide into Cold Shoe**



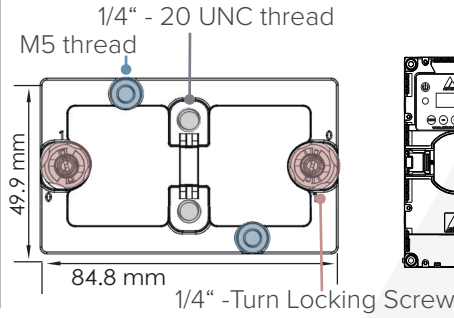
**Tiltable**



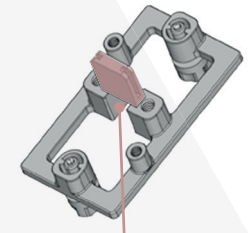
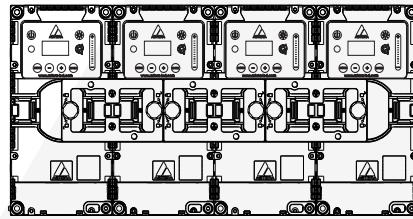
**ConnectorPlate**  
FP6-CP



**Dimensions**



**Connect up to 4 HydraPanels**



Connector for Cold Shoe

**BabyPin 1/4"**  
AX-BBP-1/4



**200 mm Power / DataCombination Cable**  
PWB-CAB-0.2



**Power Supply for Helios/ Titan Tube**  
FP1-CHR



**Power Supply for Hyperion Tube**  
FP1-CHR



**EyeBolt**  
FP1-EBLT



**Snapbag**  
SBATHY11



**Light modifiers**  
**SoftFrame 100**  
FP6-SF-100



**Intensifier 80**  
FP6-INT-80



**Kits empty**  
**Single Unit Case**  
FP6-CSE-1



**Kits full**  
**Single Unit Kit**  
FP6-SET-1



**EggCrate 40**  
FP6-EGC-40



**EggCrate 60**  
FP6-EGC-60



**Charging Case for 4**  
FP6-CHRCSE-4



**Kit for 4**  
FP6-SET-4



**DiffusorSheet 100**  
FP6-DS-100



**GelHolder**  
FP6-GH



