



CATALOG



INVENTIONS FOR YOU.

Astera is a German hardware, software and manufacturing specialist. Since the mid-2000s, Astera has been producing battery powered, remote controlled LED lights. In 2007 Astera moved its factory from Germany to Shenzhen/China, the worldwide hub of LED technology and electronic innovation. By now, this factory has been expanded to more than 5000 sqm and is run by an international team of specialists.

True to its roots, Astera only manufactures battery-powered lights and accessories. Over the years the company kept adding features and new technologies to its lights. A range of battery spotlights has been used to illuminate numerous world-famous events.

In 2018, Astera noticed an increasing demand from the media industry for portable lights that can be used to shoot movies, commercials, music videos etc. and decided to build a product dedicated for this market. Astera got in touch with gaffers and cinematographers and with their help developed the award-winning Titan Tube.

For the coming years, several unique products are under development. Astera loves to listen to customers and with their help develop well thought-through products that help customers express their creativity and that professionals enjoy using.

N. Ernst
Norbert Ernst
CEO, Astera

100% WIRELESS



Max. 20h

Advanced battery technology and control lets you set the battery runtime to up to 20 hours. You can be sure that your Astera fixture won't run out of juice before your production is finished.



Wireless DMX

Each of our lights has a CRMX module from LumenRadio built in, offering you the most reliable DMX technology on the market.



App

AsteraApp offers intuitive and fast control of complex lighting setups and is also used to change DMX settings of the lights as well as monitor them out of a distance.



IP65

All Astera fixtures come in IP65 waterproof housings to make sure you can use them outdoors without worries.

INDEX

INTRO

100% Wireless | Astera System | Titan LED Engine

2-9

PIXELBRICK

10-11

TUBES

12-15

AX9 & AX5

16 - 21

AX3

22-23

AX2

24-25

NYX BULB

26-27

POWER & CONNECTIVITY

28-29



WHAT MAKES OUR LIGHTS THE NUMBER ONE CHOICE?



Talkback+

Detect all available lights, set them up, check their status, configure DMX addresses and DMX profiles.



Seamless Runtime

Set the length of your event and be sure that your lights won't run out while still getting the maximum brightness.



TruColor Calibration

Individually calibrated lights lead to 100 % color consistency and exact color reproduction of color temperatures and standard filter gels.



Effects

Quickly create programs out of colors and effects. Turn multiple programs and lights into scenes.



Flicker Free

Scrambled PWM technology to avoid flickering when filming.



Green/Magenta correction

Adjust green/magenta during content creation to reduce post-production work.



Scheduled Stand-by

Switch lights into power-saving standby and schedule them to wake up when the event starts.



Dynamic Power-boost

This exclusive feature makes the light able to display the maximum brightness at all time and intensify non-white colors.



Emergency Light

Switches to white light when AC power is cut to keep your event save.



Anti-theft

The lights give visual and audible alarm and send a notification to the AsteraApp if they are being moved during an event.



DJ Feature

Auto BPM analyzes the beat and matches programs to it, flash buttons can trigger special effects while being held down.



Other features

The AsteraApp is packed with many additional items and new features are frequently added via software updates.

ASTERA APP

The most powerful lighting control App for film and event lighting

The AsteraApp is the result of 10 years of development and specifically designed for fast and efficient temporary light setups. It is much more than a lighting control app as it also does all the setup that would usually be done on the light itself and enables many new features that cannot be found in any other light. All in all, it is a huge time-saver when setting up, monitoring or controlling lights.



CREATIVITY AT YOUR FINGERTIPS

Create complex animated effects with thousands of pixels that stretch over multiple lights. The AsteraApp offers an intuitive user interface with preinstalled and fully customizable programs and effects.

SMART DIAGNOSING AND EDITING

Easily setup and monitor your lights from the palm of your hand, no matter how complex your production may be. Powerful tools let you quickly adjust settings of multiple lights, e.g. when preparing them for DMX usage.

COMPLEX CUSTOMIZABLE EFFECTS

Choose from a wide range of preinstalled, highly customizable effects. Have all lights react simultaneously without delay or stretch effects over multiple lights. Your lights will remember and repeat these effects without requiring a constant wireless link.

..and more functions:

- SCENES
- WAREHOUSING
- MANUALS INCLUDED
- SCHEDULED STAND-BY
- BACKUP & HANDOVER
- AUTO-UPDATES

WIDE APPLICATION RANGE

The AsteraApp is designed for beginners and professional operators alike. It is suitable for event and film lighting scenarios no matter if you control just one light or a complex setup with different groups of hundreds of lights.

PRECISE COLOR INPUT METHODS

AsteraApp offers several useful tools to select colors so you are covered no matter if you want to mix your own color or input an exact RGB value or x, y coordinate. Thanks to Astera's industry-leading digital calibration, the fixtures are able to reproduce the exact color selected in the app.

GROUP YOUR LIGHTS

AsteraApp can control individual lights but is also able to create a total of 256 groups each with multiple lights. To increase your possibilities even further, groups can have multiple positions/addresses.

Watch our tutorials for more information:



www.astera-led.com/academy

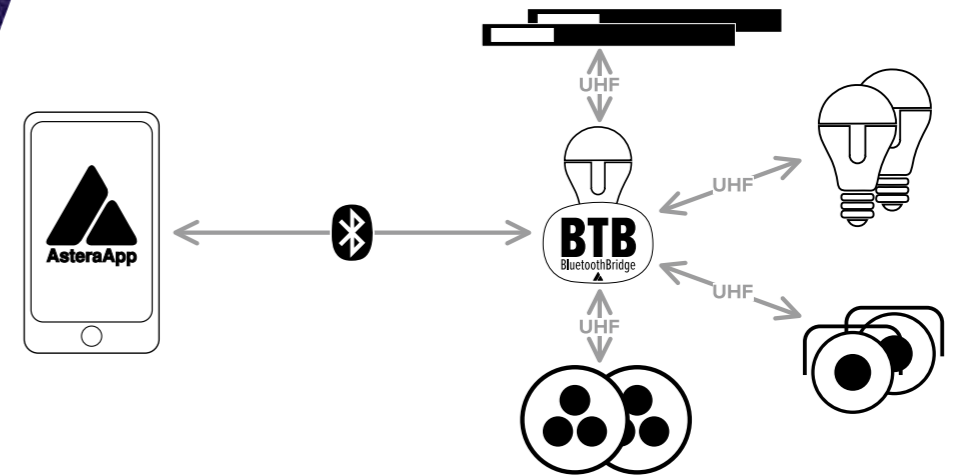


BLUETOOTH BRIDGE

Connect directly to selected Astera lights via Bluetooth. This master light will revert AsteraApp commands to itself and other Astera lights via UHF band. Works as well with the AsteraBox.

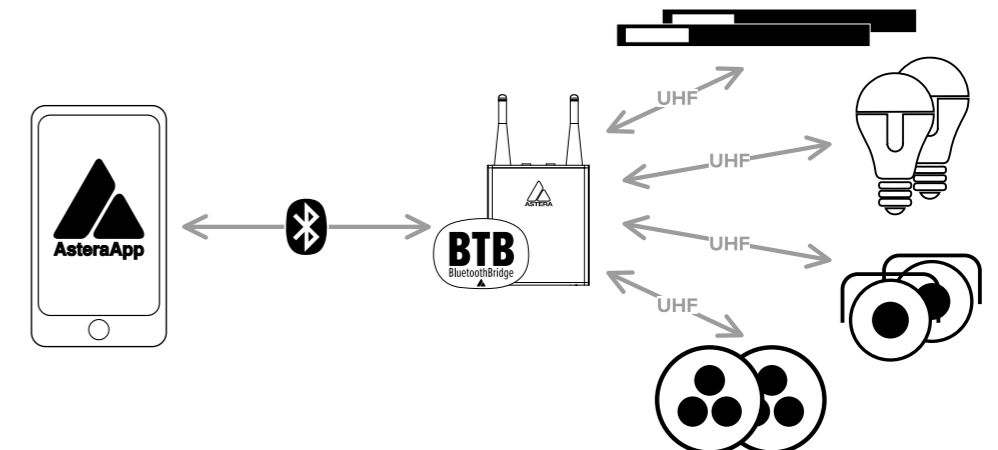


Astera Light* as BluetoothBridge



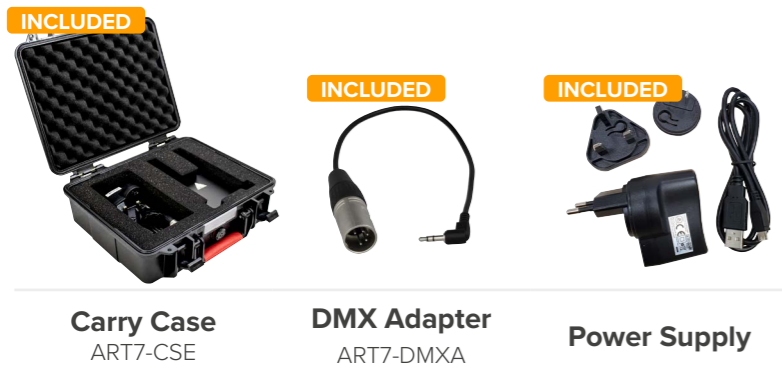
*BluetoothBridge works only with NYX Bulb, PixelBrick, AX9, Titan Tube BTB, Helios Tube BTB.

Astera Box as BluetoothBridge

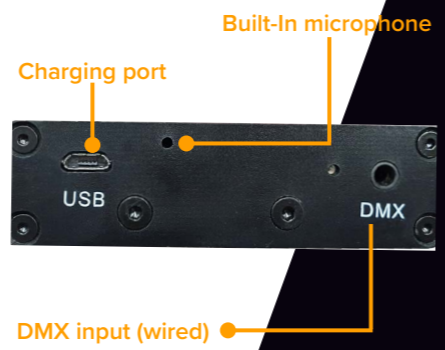
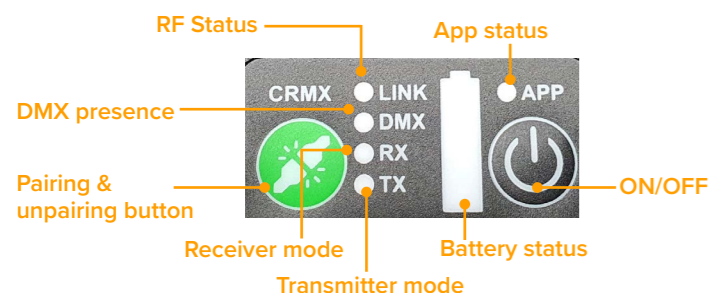


ASTERABOX^{ART7}

AsteraBox is the interface between lights and controller. It works as Bluetooth Bridge that can be carried on your belt thanks to its built-in battery. It can also be connected to a DMX desk to transmit wireless DMX data to all Astera lights and other lights with CRMX receiver.



THE ASTERA SYSTEM



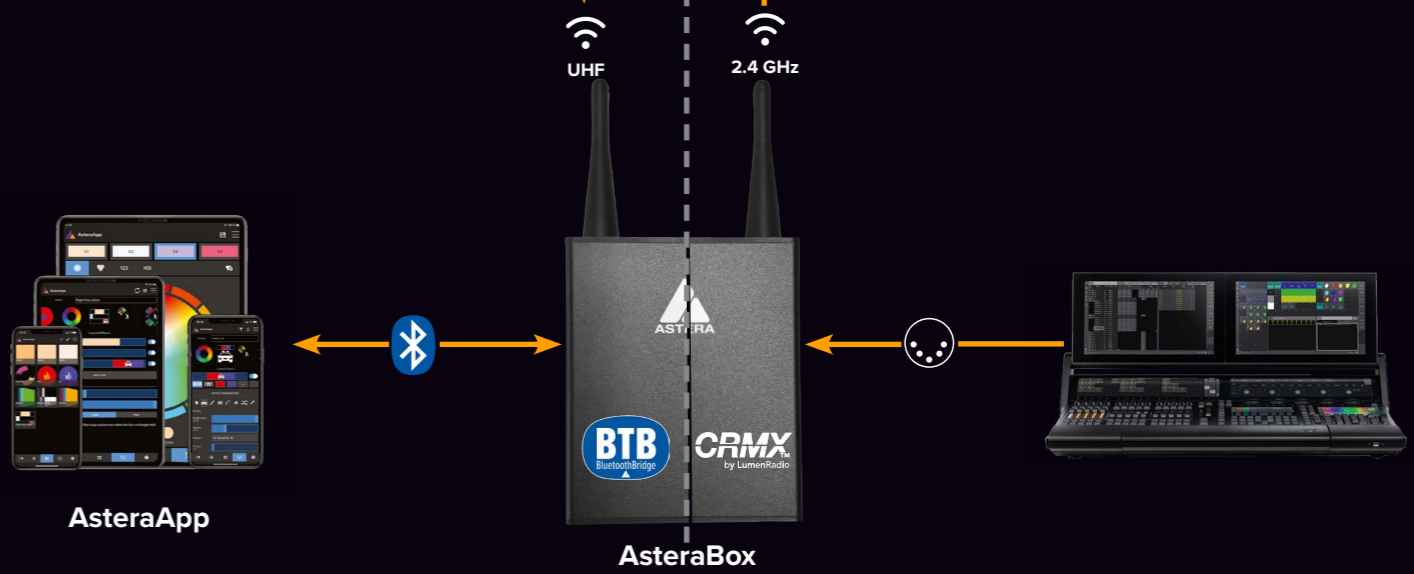
SPECIFICATIONS

Order Code	ART7-U
Battery	Rechargeable Li-Ion
Battery Runtime	72h (App); 18h (CRMX)
Range	CRMX/UHF: 300 m; Bluetooth: 10 m
Frequency	UHF, 2.4GHz
Dimensions (mm/inches)	144 x 78 x 30 / 5.7 x 3.1 x 1.2
Weight (kg/lbs)	0.230 / 0.5

RF CHARACTERISTICS ASTERABOX

Wireless Modules	EU: UHF (863-870MHz)	USA: UHF (917-922.20MHz)	AUS: UHF (922.30-927.50MHz)	SGP: UHF (920.50-924.50MHz)	KOR: UHF (917.9-921.5MHz)	RUS: UHF (868.75-869.12MHz)	JPN: UHF (922.80-926.40MHz)	CRMX (2402-2480MHz)	Bluetooth 4.1 (2402-2480MHz)
Modulation	FHSS	FHSS	FHSS	FHSS	FHSS	FHSS	FHSS	FHSS	FHSS
ERP (Transmitter)	<25mW	<25mW	<25mW	<25mW	<25mW	<25mW	<25mW	<100mW	2mW (classic) 2mW (BLE)
Channel Count	47	53	53	41	10	6	19	79	79 / 40

- Set up Lights**
Set up your lights conveniently out of the distance. Adjust DMX settings on one or several lights. After your job, do a master reset.
- Monitor Lights**
Check your lights while operating them. View battery status, settings, targeted lights and get informed if a light is being moved.
- Control Lights**
Send effects and colors to your lights. Choose which lights you want to target. Save programs for quick launch later.
- Wireless DMX**
The AsteraBox works as a wireless DMX transmitter with CRMX technology, just connect it with the included XLR adapter.
- Compatible**
Astera Lights can be controlled together by CRMX and W-DMX (limited compatibility) so you can use them together with other wireless lights.



TITAN LED ENGINE

The heart of the Titan LED engine is a revolutionary algorithm which generates an individual calibration for each light after measuring its photometrics during Astera's manufacturing process.


This not only leads to accurate colors and total consistency between fixtures but also optimizes the output for high CRI and long battery runtime, no matter if displaying whites or highly saturated colors.

Temperature compensation during operation constantly measures the temperature of each LED chip and adjusts the intensity of the red, green, blue, mint and amber LEDs accordingly to maintain an even output.

With this technology the Titan LED engine can reproduce precise color temperatures, RGB values and colors defined by x, y coordinates from the AsteraApp and DMX consoles.

To ensure a high level of precision, selected Service Centers can re-calibrate the LEDs after a long runtime if needed.

ASTERA TITAN LED ENGINE



TITAN LED ENGINE

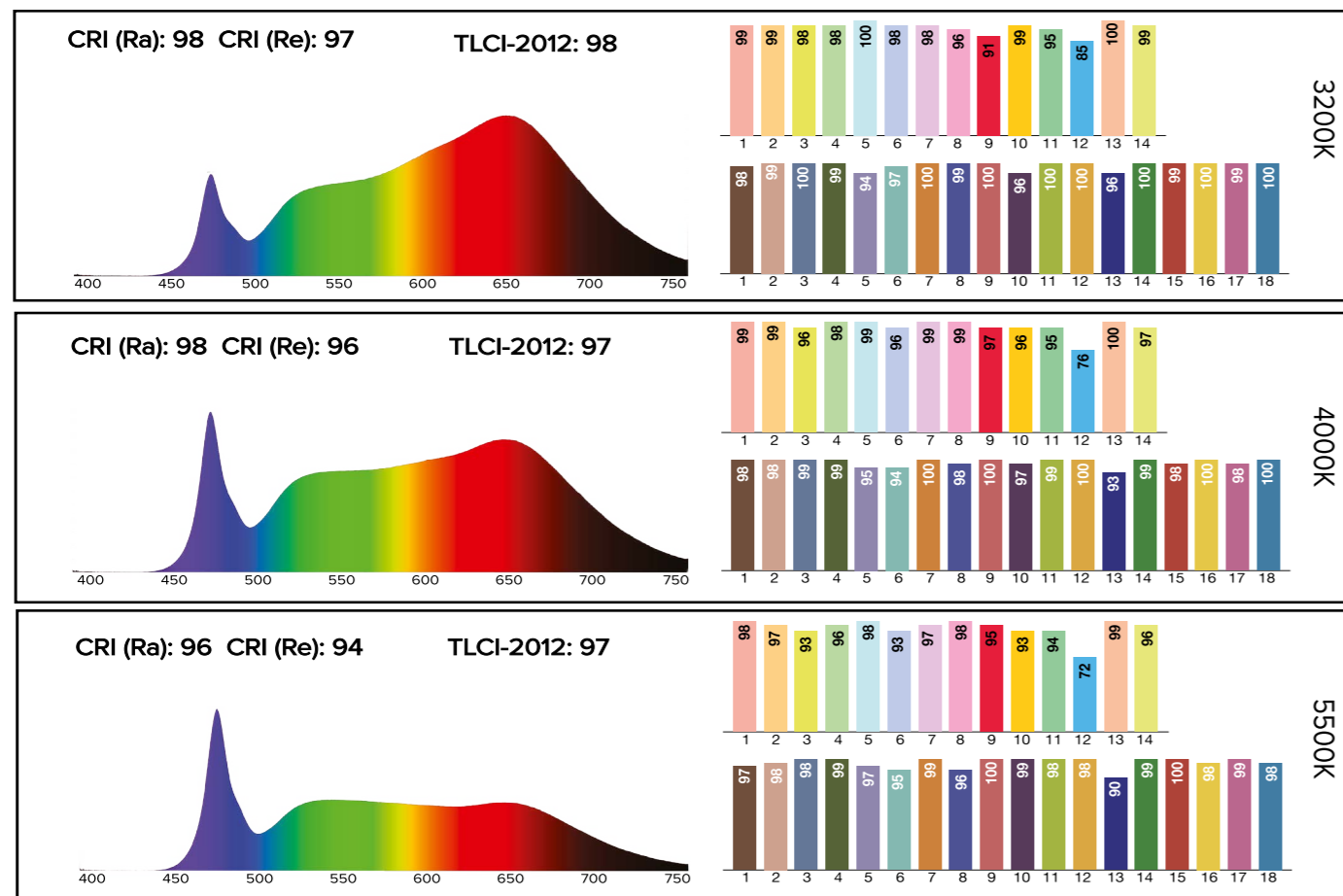
RGB+MINT+AMBER
FULL SPECTRUM

1750K - 20000K
WIDE CCT RANGE

TLCI/CRI Ra ≥ 96
EXCELLENT COLOR RENDERING
from 3.200K to 6.500K

RGB, HSI, X,Y & FILTER GELS

Spectra of lights with Titan LED Engine*



*Typical values



PIXELBRICK PB15

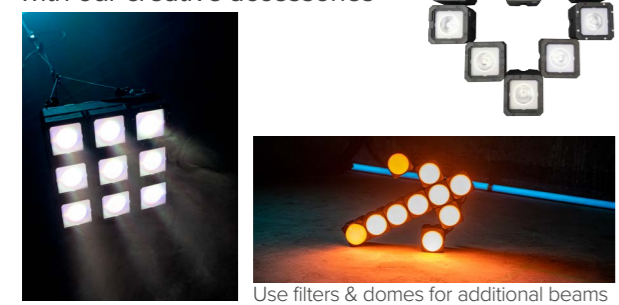
Say hello to our next-generation multi-purpose light. In addition to being a battery-powered uplight and spotlight with 5 different beam options, multiple PixelBricks can be connected to form clusters and shapes. With about 10cm edge length and 1kg weight, it is small and lightweight while still featuring a powerful output of high-quality light which meets the highest demands of film, TV and stage clients.

15W RGBMA

- Max. 20h
- App
- Wireless DMX
- IP65



BUILD CUSTOM SHAPES with our creative accessories



Use filters & domes for additional beams

FEATURES

AIRLINE TRACKS
on 4 sides for mounting and building shapes and clusters

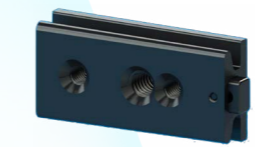
SOCKETS
for power management and wired DMX

BACKSIDE DISPLAY
with Titan Tube layout for standalone operation and DMX preparation

MULTI FUNCTIONAL BRACKET
removable, with Airline Track, 1/2" hole and 3/8"-16 UNC thread for hanging and mounting



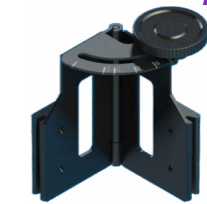
ACCESSORIES



BrickMount
Slide into the PixelBrick's side to connect mounting tools through 1/4"-20 and M5 threads.
PB15-BMO



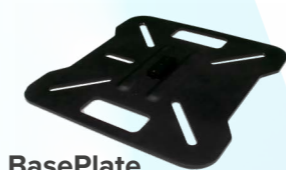
BrickConnect
Connect 2 PixelBricks to each other's side.
PB15-BCN



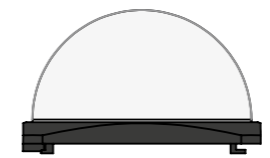
BrickHinge
Connect 2 PixelBricks, angle them to spread their beam and to create shapes.
PB15-BHI



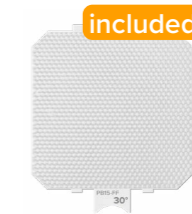
BrickTilt
Connect 2 PixelBricks, tilt them to spread their beam and to create shapes.
PB15-BTLT



BasePlate
Mount PixelBricks on a base plate to create towers and more.
PB15-BBSE



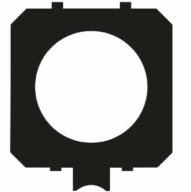
BrickDome
Create an evenly illuminated pixel dome or remove the 120° filter for a wide-angle soft light.
PB15-BDM



FloodFilter
Insert filter into light to get a 32° beam.
PB15-FF



BeamSoftener
Insert filter to mix colors better and get a softer 17° beam.
PB15-BSO



Stealth Cover
Gives a black surface so that it can blend into dark environments
PB15-SC

ACCESSORY SET

520 x 400 x 140 mm
13.3 kg/29.3 lbs (full weight)
PB15-ACCCSE-SET



- Contains**
- 10x BrickMount (PB15-BMO)
 - 4x TrackPin (AX-TP)
 - 8x BrickDome (PB15-BDM)
 - 8x BrickHinge (PB15-BHI)
 - 8x BrickTilt (PB15-BTLT)

- 8x Eyebolt (FP1-EBLT)
- 2x 5m Power/Data Combination cable (PWB-CAB-5)
- 6x 0.2mm Power/Data Combination cable (PWB-CAB-0.2)

PIXELBRICK SET

541.5 x 400 x 205.5 mm
21.3 x 17.44 x 8.1 inches
16.3 kg/36 lbs (full weight)
PB15-SET



- Contains**
- 8x PB15 PixelBrick (PB15)
 - 1x PowerBox (PWB-2-86)
 - 1x PowerConTrue1
 - 8x BrickConnect (PB15-BCN)
 - 8x FloodFilter, 8x BeamSoftener (PB15-FF, PB15-BSO)

SPECIFICATIONS

Order Code	PB15
LED Engine	Titan LED Engine (RGBMintAmber)
Total LED Power	15W
Power Draw	12W
Light Output – 2700K, 3200K, 5500K*	388lm, 450lm, 375lm
Emittance @2m – 2700K, 3200K, 5500K*	1700lx, 2200lx, 2000lx
CRI(Ra)/TLCI 3200-6500k*	≥96
Beam Angle	13°
Strobe	0 - 25Hz
Battery Lifetime	70 % after 300 cycles
Battery Runtime	up to 20 hours
Charging Time (nominal)	5 hrs
DC Input	24VDC

Input Current	0.8A
Wired DMX	Yes (via PWB-2-86)
CRMX Receiver	Built in
BluetoothBridge	Built in
Wireless Frequencies	CRMX 2.4GHz, UHF, Bluetooth, WiFi
Range (m/yds)	300/330 (Bluetooth 3/3,3)
Housing Material	Aluminium
IP Rating	IP65
Ambient Temperature (°C/°F)	0° - 40° / 32° - 104°
Weight (kg/lbs)	112 / 2.47
Dimensions (mm/inches)	91 x 91 x 94 / 3.6 x 3.6 x 3.7

*typical values

TUBES. FOR EVENTS. FOR FILM. FOR BOTH.



Max. 20h



App



Wireless DMX



IP65

HELIOS TUBE

TITAN TUBE

HYPERION TUBE



Designed for Film/Broadcasting lighting and the highest performance. All 3 tubes are optimized for ultra-high CRI/TLCI and peak brightness. In addition to wireless power and control they can be wired with power and data through a single cable.

PIXEL TUBE

An affordable yet very powerful battery LED tube for stage, event and entertainment lighting. It can be used on stages, around event sites and to create stunning lighting effects. A highly creative device that offers an infinite range of possibilities.

● STBY

CLIP B001 C001

THE NEW TUBES - WITH BLUETOOTH BRIDGE



Our new Titan Tubes and Helios Tubes contain Bluetooth Bridge, a technology that Astera has been integrating into lights such as NYX Bulb, PixelBrick and AX9. You can connect your phone or tablet directly to the tube and use it to control additional Astera lights. An AsteraBox is not needed anymore for App control. Additional information on page 5.

IDENTIFY TUBES WITH BLUETOOTH BRIDGE

BTB-enabled Titan & Helios Tubes are marked with a BTB Logo.



SPECIFICATIONS

HELIOS TUBE	TITAN TUBE	HYPERION TUBE	PIXEL TUBE
8 Pixel	16 Pixel	32 Pixel	16 Pixel
24 W Max Power Draw	48 W Max Power Draw	96 W Max Power Draw	16 W Max Power Draw
36 W LED Power	72 W LED Power	144 W LED Power	28 W LED Power
1.340 lm Brightness in white*	2.900 lm Brightness in white*	5.800 lm Brightness in white*	955 lm Brightness in white*
550 mm	1.035 mm	2.031 mm	1.035 mm

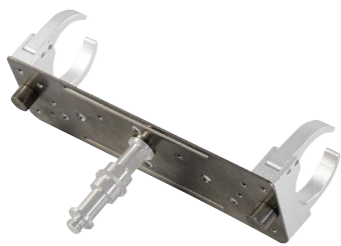
	FP2	FP1	FP3	AX1
Order Code	FP2	FP1	FP3	AX1
LED Engine	Titan LED Engine (RGBMintAmber)			RGBW
Total LED Power	36W	72W	144W	28W
Power Draw	24W	48W	96W	16W
Light Output	1340lm	2900lm	5800lm	955lm
Emittance @1m	393lx	785lx	1570lx	270lx
CRI(Ra)/TLCI 3200-6500k*	≥96			≥80
Strobe	0 - 25 Hz			
Pixel	8	16	32	16
Battery Lifetime	70 % after 300 cycles			
Battery Runtime	up to 20 hours			
Charging Time (nominal)	3 hours			5 hours
DC Input	24V DC, 1A	24V DC, 2A	24V DC, 4A	48V DC, 0.5A
Wired DMX	Yes			No
CRMX Receiver	Built in			
BluetoothBridge	Built in			-
Wireless Frequencies	CRMX 2.4GHz, UHF, (Bluetooth + WiFi only in Titan & Helios with BTB)			CRMX 2.4GHz, UHF
Range (m/yds)	300m; 330 yds			
Housing Material	Polycarbonate; metal end caps			
IP Rating	IP65			
Ambient Temperature (°C/°F)	0°-40° C; 32°-104° F			
Weight (kg/lbs)	0,765 kg; 1.69 lbs	1,35 kg; 3.0 lbs	2,9 kg; 6.39 lbs	1,1 kg; 2.5 lbs
Dimensions (mm/inch)	Ø42 x 550 mm Ø1.6 x 21.65 inch	Ø42 x 1.035 mm Ø1.6 x 40.7 inch	Ø42 x 2.031 mm Ø1.6 x 79.9 inch	Ø42 x 1.035 mm Ø1.6 x 40.7 inch

*Typical values

ACCESSORIES



Crossplate
Connects up to 4 tubes to one Babypin (welded to backside)
AX1-CP



Wingplate
Hang tubes via one babypin or connect several tubes together
AX1-WP



Holder
Fix tubes via screws or baby-pin to walls and structures
AX1-H



Stand
Foldable tripod for a quick setup
AX1-STD



Babypin
Connects Holder/Wingplate to Manfrotto and Matthews clamps
AX1-BLT



Helios Handle
Use Helios as a handheld light (only suitable for Helios Tube)
FP2-HND



Eyebolt
Eyebolt for hanging Titan, Helios and Hyperion Tubes (also as secondary mounting for all Tubes)
FP1-EBLT / AX1-EBLT (no rubber ring)

SOFTBAG TITAN/PIXEL TUBE

For up to 4 Titan Tubes / Pixel Tubes and all their accessories, power supplies, wingplates, cables and more
1085 x 310 x 175 mm
FP1-SB



SOFTBAG HELIOS TUBE

For up to 4 Helios Tubes and all their accessories, power supplies, wingplates, cables and more
590 x 300 x 132 mm
FP2-SB



TUBE-SETS & CASES

Cases for charging and safe transportation of your tubes and accessories.

HELIOS TUBE SET

765 x 503 x 260 mm
29 kg/64 lbs (full weight)
FP2-SET

8x Helios Tube

- 16x Babypin
- 16x Holder
- 1x PowerBox
- 1x AC Cable
- 16x Eyebolt
- 8x Stand



TITAN TUBE SET

1147 x 443 x 157 mm
35 kg/77 lbs (full weight)
FP1-SET

8x Titan Tube

- 16x Babypin
- 16x Holder
- 1x PowerBox
- 1x AC Cable
- 16x Eyebolt
- 8x Stand



4x Hyperion Tube

HYPERION TUBE SET

2262 x 394 x 149 mm
29 kg/64 lbs (full weight)
FP3-SET

- 8x Babypin
- 8x Eyebolt
- 8x Holder
- 4x Wingplate
- 1x DataLink
- 1x Power Supply Unit Adapter
- 4x Power Supply Unit



PIXEL TUBE SET

1147 x 443 x 157 mm
33 kg/72.8lbs (full weight)
AX1-SET

8x Pixel Tube

- 16x Babypin
- 16x Holder
- 1x AX1 ChargingBox
- 16x Eyebolt
- 8x Stand



All Tube Cases come with:

WHEELS
not Hyperion Set



HANDLE



IN CASE CHARGING



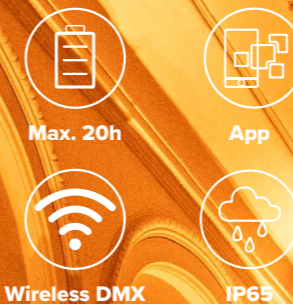
RUGGED CASE



AX9 PowerPAR

AX5's Big Brother – Twice as bright!

The AX9 utilizes the AX5's successful 3-in-1 concept which allows it to be used as wireless light and elegant uplight as well as a wired PAR light for longer or bigger installations. This makes it an extremely cost-efficient light and keeps your investment to a minimum. The AX9 packs extreme brightness in a compact and light housing while still giving you industry-leading colors and white tones thanks to its Titan LED Engine.



AX5 TriplePAR

3-in-1 The Perfect PAR

Optimized for a fast return on investment, AX5 replaces your wireless and wired PARs as well as battery uplights.

105W RGBMintAmber

45W RGBAW



COMPARISON

	AX9 PowerPAR	AX5 TriplePAR	
LED Engine	Titan LED Engine (RGBMintAmber)	RGBAW	LED Engine
Total LED Power	105W	45W	Total LED Power
Weight (kg/lbs)	5.7 / 12.5	3.4 / 7.5	Weight (kg/lbs)
Bracket	Removable with Airline Track, 3/8" thread, 1/2" hole	Removable with 3/8" thread	Bracket
App Control	via AsteraBox or Bluetooth Bridge	via AsteraBox	App Control
Control Panel	OLED screen with 5 buttons + dedicated buttons for color & brightness	LCD screen with 5 buttons	Control Panel



Stand

Optimized bracket with Airline Track, 3/8" thread, 1/2" hole



Airline Track & Thread

Airline Track, 3/8" thread and 1/2 hole for several mounting tools.



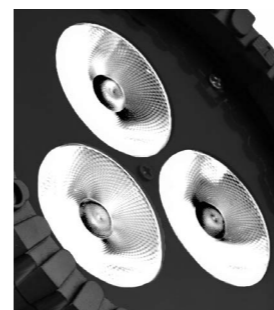
Removable Bracket

Turn your AX9 into an uplight in seconds



7x15 RGBMintAmber LED

And high CRI due to individual factory calibration



3x15 RGBAW LED

And high CRI due to individual factory calibration



Removable Bracket

Turn your AX5 into an uplight in seconds



Stand

Foldable and with thread for hanging

3-IN-1

Wireless PAR



Elegant Uplight



Adjustable kickstand for flexible wall uplighting

Wired PAR



AX9 ACCESSORIES



Flex Cover White

Wrap around the AX9 to turn it into an elegant uplight.
AX9-FLXCVR-WT



Flex Cover Mirror

Wrap around the AX9 to turn it into an elegant uplight.
AX9-FLXCVR-MIR

INCLUDED



FloodFilter 32°

Insert filter into light to get a 32° beam.
AX9-FF

INCLUDED



WallwashFilter 17°x46°

Insert filter into light to get an elliptical 17° x 46° beam.
AX9-WWF



EggCrate

Cuts off spill light around the beam and avoids glare.
AX9-EGC



3-IN-1

Wireless PAR



Elegant Uplight



Adjustable kickstand for flexible wall uplighting

Wired PAR



AX5 ACCESSORIES



Flex Cover White

Wrap around the AX5 to turn it into an elegant uplight.
AX5-FLXCVR-WT



Flex Cover Mirror

Wrap around the AX5 to turn it into an elegant uplight.
AX5-FLXCVR-MIR



Volcano Cover White

Slide the volcano cover over an AX5 to give it a clean and classy look.
AX5-VULCVR-WT

INCLUDED



FloodFilter 32°

Insert filter into light to get a 32° beam.
AX5-FF

INCLUDED



WallwashFilter 17°x46°

Insert filter into light to get an elliptical 17° x 46° beam.
AX5-WWF



Rotatable Filter 17°x46°

Filter with elliptical 17° x 46° beam that can be turned around while inserted into the light.
AX5-ROTAD



Diffuser Dome

Use as softlight projector or insert the included 120° filter to create a stunning light ball.
AX5-DDM



Snoot

Built-in beam shaping tool to narrow and define the beam. Integrated honeycomb to avoid glare.
AX5-SN

CHARGING

AX9 CHARGING CASE

Attention: Cases are different depending on your country - please ask your local dealer for more details.



DEDICATED SPACE FOR 8X (max) AX9

8x TrackPin 8x Bracket 1x Charging Plate

8x Super Clamp 16x Filter



CHARGING PLATE (FOR 8 AX9)

715 x 558 x 157 mm / 28.1 x 23 x 6.2 inch (only on request)
AX9-CHRPLT-8

FEATURES

Keypad with dedicated brightness & color buttons

Charging contacts for flight case charging



AX9 SPECIFICATIONS

Order Code	AX9
LED Engine	Titan LED Engine (RGBMintAmber)
Total LED Power	105W
Power Draw	70W
Light Output - 2700K, 3200K, 5500K*	2497 lm / 3008 lm / 2891 lm
Emittance @2m - 2700K, 3200K, 5500K*	9700 lx / 9900 lx / 9600 lx
CRI(Ra)/TLCI 3200-6500K*	≥96
Beam Angle	13°
Strobe	0 - 25Hz
Battery Lifetime	70 % after 300 cycles
Battery Runtime	up to 20 hours
Charging Time (nominal)	5 hrs

AC Input	100-240VAC, 50/60Hz, 2.3A/115VAC ~ 1.1A/230VAC 110W
Wired DMX	Yes
CRMX Receiver	Built in
BluetoothBridge	Built in
Wireless Frequencies	CRMX 2.4GHz, UHF, Bluetooth, WiFi
Range (m/yds)	300/330 (3/3.3 Bluetooth)
Housing Material	Aluminium
IP Rating	IP65
Ambient Temperature (°C/°F)	0° - 40° / 32° - 104°
Weight (kg/lbs)	5.66 / 12.5
Dimensions (mm/inches)	175 x 222 x 256 / 6.9 x 8.7 x 10.1



AX5 CHARGING CASE

740 x 580 x 540 mm
45 kg/99 lbs (full weight)
AX5-CHRCSE

DEDICATED SPACE FOR 8X (max) AX5

8x AX5 Bolt 8x Bracket 1x Charging Plate

8x Super Clamp 16x Filter

Exact case design varies from country to country



CHARGING PLATE (FOR 8 AX5)

700 x 540 x 250 mm
8 kg/17.6 lbs (empty weight) (only on request)
AX5-CHRPLT-8

FEATURES

Keypad with 5 Buttons

Charging contacts for flight case charging



AX5 SPECIFICATIONS

Wired DMX	Yes
CRMX Receiver	Built in
Wireless Frequencies	CRMX 2.4GHz, UHF
Range (m/yds)	300/330
Housing Material	Aluminium
IP Rating	IP65
Ambient Temperature (°C/°F)	0° - 40° / 32° - 104°
Weight (kg/lbs)	3.4 / 7.5
Dimensions (mm/inches)	145 x 190 x 221 / 5.7 x 7.5 x 8.7

Order Code	AX5
LED Engine	RGBAW
Total LED Power	45W
Emittance*	4,800lx (@2m; white 3200K)
CRI(Ra)/TLCI 2700-4000K*	≥92
Beam Angle	13°
Strobe	0 - 25Hz
Battery Lifetime	70 % after 300 cycles
Battery Runtime	up to 20 hours
Charging Time (nominal)	5 hrs
AC Input	110 - 240VAC, 50/60 Hz

*typical values

AX3 LightDrop

The AX3 is a battery operated, easy to use IP65 RGBW puck aimed at stage lighting and corporate events. It can be used as uplight as well as hanging or standing spotlight and inside translucent objects, truss, etc. It is extremely compact and yet offers a high brightness paired with long battery runtime and range.



Max. 20h



App



Wireless DMX



IP65

15W RGBW



Small yet powerful
only 95mm diameter and 59mm height (inches 3.7x2.3)



Removable Bracket

3/8" thread for hanging and mounting on truss

3x M4 thread for hanging and safety

Backside magnet for easy mounting

Adjustable kickstand for flexible wall uplighting



DiffuserDome

Create a wide-angle soft light or add a 120° filter to create an evenly illuminated pixel dome. AX3-DDM



WallwashFilter (17°x46°)

Insert filter into light to get an elliptical 17° x 46° beam. AX3-WWDSK

INCLUDED



FloodFilter (30°)

Insert filter into light to get a 30° beam. AX3-DDSK-30

INCLUDED



DiffuserFilter (120°)

Insert filter into light to get a 120° beam. AX3-DDSK-120

SET



AX3 SET

520 x 400 x 140 mm
20.5 x 15.7 x 5.5 inches
12,4 kg/27.3 lbs (full weight)
AX3-CRMX-SET

8x AX3 including Brackets

8x 30° Filter

8x 120° Filter

32x Rubber Feet

24x Hook

8x Socket Cover

1x Power Cord

SPECIFICATIONS

Order Code	AX3-CRMX
LED Engine	RGBW
Total LED Power	15W
Power Draw	tba
Light Output – 2700K, 3200K, 5500K*	tba
Emittance*	4,800lx (@2m; white 3200K)
CRI(Ra)/TLCI 2700-4000K*	n/a
Beam Angle	13°
Strobe	0 - 25Hz
Battery Lifetime	70 % after 300 cycles
Battery Runtime	up to 20 hours
Charging Time (nominal)	5 hrs
DC Input	110~240VDC / 5V DC @ 2.5A

Wired DMX	No
CRMX Receiver	Built in
Wireless Frequencies	CRMX 2.4GHz, UHF
Range (m/yds)	300/330
Housing Material	ABS
IP Rating	IP65
Ambient Temperature (°C/°F)	0° - 40° / 32° - 104°
Weight (kg/lbs)	0.679 / 1.4
Dimensions (mm/inches)	120 x 59 x 114 / 4.7 x 2.3 x 4.4

*typical values

AX2 PIXEL BAR

Astera's Wireless PixelBar is a linear wash fixture. Each of its LEDs can be individually addressed and offers ultra-high color rendering, digital color calibration and a native 21° beam. Thanks to its smart stands, hanging bracket, connectable endcaps and the integrated Airline Track it can be quickly assembled in numerous ways and is suitable for a wide variety of applications such as concert/touring, corporate events, TV etc.

Available in 2 sizes 50cm with 8x10W and 100cm with 16x10W (20" and 40")

- Max. 20h
- App
- Wireless DMX
- IP65



160W RGBMintAmber

80W RGBMintAmber

Removable feet

Multi-functional feet with quick-release clamp

BarConnect+

for connecting several AX2.
With IR-Module for easy communication

Airline Track

Airline Track at back and bottom to attach mounting tools

Barndoors

Control the shape of the light

ACCESSORIES

TrackPin
5/8" Babypin, connects to all Astera products with airline track.
AX-TP

FlyBar
Sturdy rigging accessory for hanging a string of connected AX2s from a single point.
AX2-FB

TrackHanger
Solid accessory for rigging and safety wires. Attaches to Astera fixtures with Airline track.
AX-TH

Barndoor for AX2
Acts as glare shield and controls the AX2 beam.
AX2-50-BD / AX2-100-BD

JumpCable for AX2
Hybrid cable that combines power in+out and data in+out into 1 cable.
AX2-JC

Filter 30°
Insert filter into light to get a 30° beam.
AX2-100-F30
AX2-50-F30

Filter 120°
Insert filter into light to get a 120° beam.
AX2-100-F120
AX2-50-F120

Stealth Cover
Gives the AX2 a black surface so that it can blend into dark environments.
AX2-100-SC
AX2-50-SC

CHARGING CASE

AX2 CHARGING CASE

1190 x 588 x 468 mm
46.9 x 22.8 x 21.3 inch
AX2-50-CHRCSE
AX2-100-CHRCSE

This sturdy flight case can charge 4 AX2-50 or 4 AX2-100 through the integrated AC distribution cable from one AC socket. Dedicated spaces for barndoors, brackets and additional side compartment for other accessories.



Can hold

- 4x PixelBar 50 or 100 (not included) (AX2-50 / AX2-100)
- 8x TrackPin (not included) (AX-TP)
- 8x Barndoor (not included) (AX2-50-BD / AX2-100-BD)
- 4x PowerCon True1 cable (included with AX2)
- 4x FlyBar (not included) (AX-FB)
- 4x JumpCable (not included) (AX-JC)
- 1x AC Distribution Cable (included) (AX2-ACDIS)
- 8x Feet (included with AX2) (AX-FT)

SPECIFICATIONS

Order Code	AX2-100 / AX2-50
LED Engine	Titan LED Engine (RGBMintAmber)
Total LED Power	160W / 80W
Power Draw	80W / 40W
Light Output – 2700K, 3200K, 5500K*	3600lm, 4460lm, 4530lm 1800lm, 2230lm, 2265lm
Emittance @2m – 2700K, 3200K, 5500K*	2700lm, 3100lm, 3900lm 1900lm, 2300lm, 2600lm
CRl(Ra)/TLCI 3200-6500K*	≥96
Beam Angle	21°
Strobe	0 - 25Hz
Pixel	16 / 8
Battery Lifetime	70 % after 300 cycles
Battery Runtime	up to 20 hours

Charging Time (nominal)	5 hrs
AC Input	100-240VAC, 50/60Hz, 2A/115VAC ~ 1.1A/230VAC 104W / 49W
Wired DMX	Yes
CRMX Receiver	Built in
Wireless Frequencies	CRMX 2.4GHz, UHF
Range (m/yds)	300/330
Housing Material	Aluminium
IP Rating	IP65
Ambient Temperature (°C/°F)	0° - 40° / 32° - 104°
Weight (kg/lbs)	7.4 kg/16.3lbs / 4.5 kg/9.9lbs
Dimensions (mm/inches)	1020 x 165 x 65 / 520 x 165 x 65 40.1 x 6.5 x 2.6 / 20.5 x 6.5 x 2.6

NYX BULB

The color-tunable LED bulb for professional film, stage and event productions. Not bigger than a normal LED bulb, it contains a CRMX receiver as well as RF and Bluetooth modules for the AsteraApp. It can be powered via E26/E27 thread or with a standard power bank and thanks to its Titan LED engine it displays precise colors and white tones with ultra-high CRI and TLCI.



App



Wireless DMX



IP44



Dual Power Input

Power through E27/E26 AC thread or external (standard power bank or NYX PowerStation)



PowerStation for NYX Bulb

Battery pack and remote display to power and program NYX Bulb. Attach NYX Bulb via lamp socket and connect mounting accessories to the integrated Airline Tracks.



ACCESSORIES

INCLUDED



USB DC Cable

Short cable to power your NYX Bulb from a 5-18VDC power source, e.g. a standard power bank.
FP5-USBC



TrackPin

5/8" Babypin, connects to all Astera products with airline track.
AX-TP



PowerStation Hanger

Ring with attaches to PowerStation to suspend or secure it.
FP5-PSH



CupBouncer

Attach to NYX Bulb via suction cup and control the light by bouncing it back.
FP5-CPB



D-TAB SplitCable

Power up to 8 NYX Bulbs from one V-mount battery with D-tab socket.
FP5-DTSC



Extension Cable for NYX Bulb

Add 1.5m of cable length to the PowerStation if you need to place a NYX Bulb further away.
FP5-EXC



INCLUDED with PowerStation

LampSocket

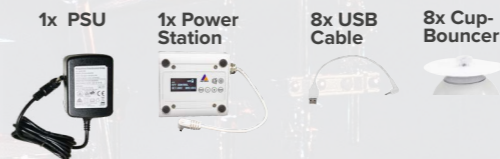
Dummy socket which attaches a NYX Bulb to a PowerStation without powering it.
FP5-E27S

SETS

NYX BULB SET

414 x 334 x 130 mm
16.3 x 13.1 x 5.1 inches
5.3 kg/11.7 lbs (full weight)
FP5-SET

8x NYX Bulb



POWERSTATION SET

520 x 400 x 140 mm
20.5 x 15.7 x 5.5 inches
8.5 kg/18.7 lbs (full weight)
FP5-PS-SET

8x PowerStation



SPECIFICATIONS

Item Code	FP5-E27 (EU, Asia, AUS) / FP5-E26 (America, JP, TW)	DC Power input	5-18V at 2A
LED Engine	RGBMintAmber	Wired DMX	No
Total LED Power / Power Draw	14W / 10W	CRMX Receiver	Built in
Luminous Flux*	750lm (@4000k)	BluetoothBridge	Built in
CRI(RA)/TLCI 3200-6500k*	≥96	Wireless Frequencies	CRMX 2.4GHz, UHF, Bluetooth LE 5.0
Strobe	0 - 25 Hz	Ambient Temperature (°C/°F)	0°-40° C; 32°-104° F
Battery	only external	Dimensions (mm/inches)	Ø70 x 130 / Ø2.76 x 5.12
AC Power input E27	100-240V 50/60 Hz via E27 thread	Weight (kg/lbs)	0.24 / 0.53
AC Power input E26	100-120V 50/60 Hz via E26 thread	Ingress Protection	IP44: connected via AC + Rubberplug in DC socket IP20: connected via DC socket

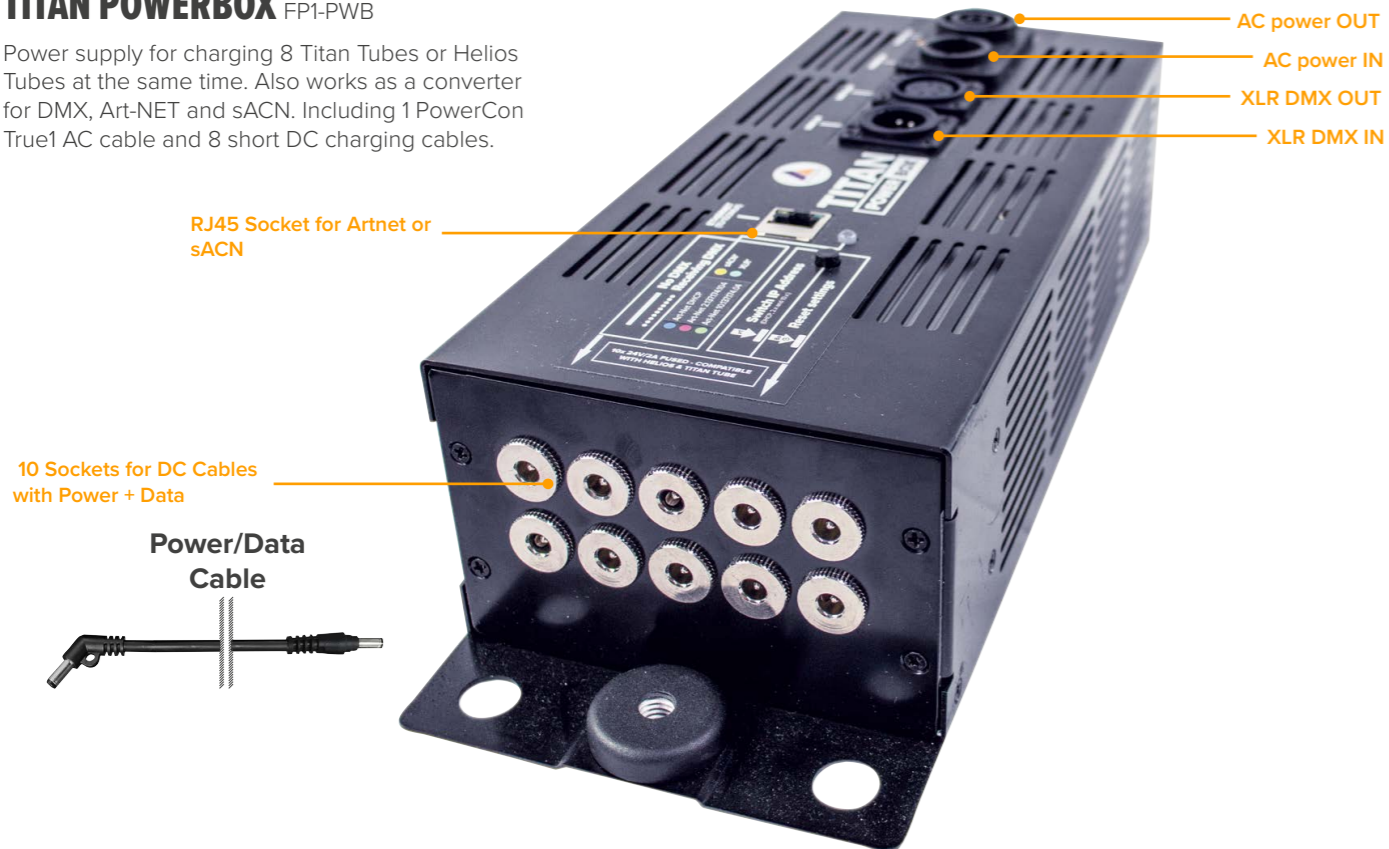
*typical values

POWER, CHARGING, CONNECTIVITY

TITAN POWERBOX

TITAN POWERBOX FP1-PWB

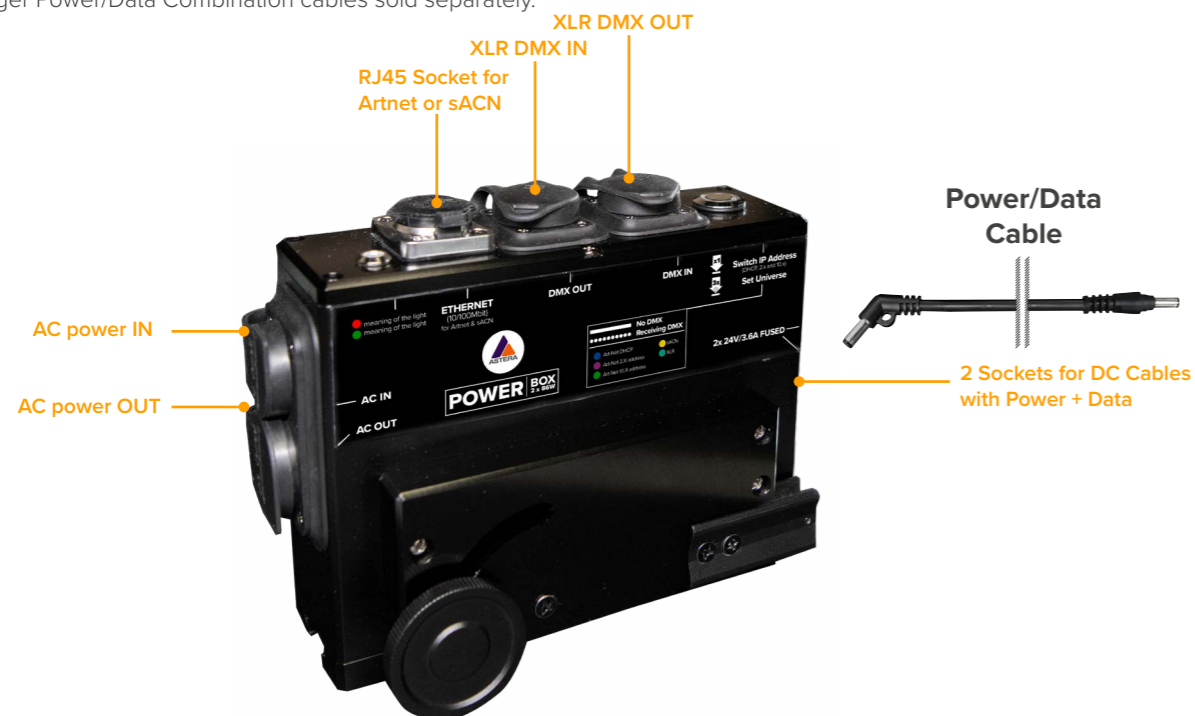
Power supply for charging 8 Titan Tubes or Helios Tubes at the same time. Also works as a converter for DMX, Art-NET and sACN. Including 1 PowerCon True1 AC cable and 8 short DC charging cables.



POWERBOX 2X86

POWERBOX 2X86 PWB-2-86

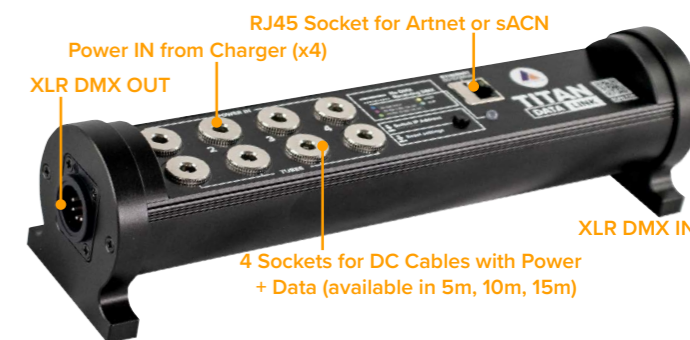
Charge or install 8 PixelBricks. Also allows wired data transfer from DMX, Artnet and sACN sources. Comes with PowerCon True1 AC cable and 8 short DC charging cables. Longer Power/Data Combination cables sold separately.



DATALINK

DATALINK FP3-DTL

Required device to send wired DMX to Hyperion Tube. Also useful for Titan Tube and Helios Tube if no Titan PowerBox is available or to work with multiple universes on one PowerBox.



COMPATIBILITY TABLE

	Helios Tube	Titan Tube	Hyperion Tube	AX1	PixelBrick
Titan PowerBox	x	x			x
PowerBox 2x86	x	x			x
Datalink	x	x	x		x
AX1 ChargingBox				x	
Power Supply for Helios/Titan Tube	x	x			x
Power Supply for Hyperion Tube	x	x	x		x
Power Supply for AX1				x	
Extension Cable for AX1				x	
Extension Cable for Helios, Titan, Hyperion	x	x	x		x
Titan Power/Data Combination Cable	x	x	x		
Power/Data Combination Cable					x

ACCESSORIES



AX1 Pixel Tube Power Supply
AC to DC power converter, charges 1 AX1 PixelTube or wires it for a longer installation. AX1-CHR



Helios/Titan Tube Power Supply
AC to DC power converter, charges 1 Titan or Helios Tube or wires it for a longer installation. FP1-CHR



Hyperion Tube Power Supply
AC to DC power converter, charges 1 Hyperion Tube or wires it for a longer installation. FP3-CHR



AX1 Extension Cable
Extend the PSU cable length by 5m. AX1-EXC



Helios, Titan, Hyperion Tube Extension Cable
Extend the PSU cable length by 5m. FP1-EXC



Power/Data Cable Titan PowerBox
Transfer Power + Data through a single cable; 5, 10 or 15m length. FP1-PWB-CAB-5/-10/-15



Power/Data Cable PowerBox 2x86
Transfer Power + Data through a single cable; 5, 10 or 15m length. PWB-CAB-5/-10/-15



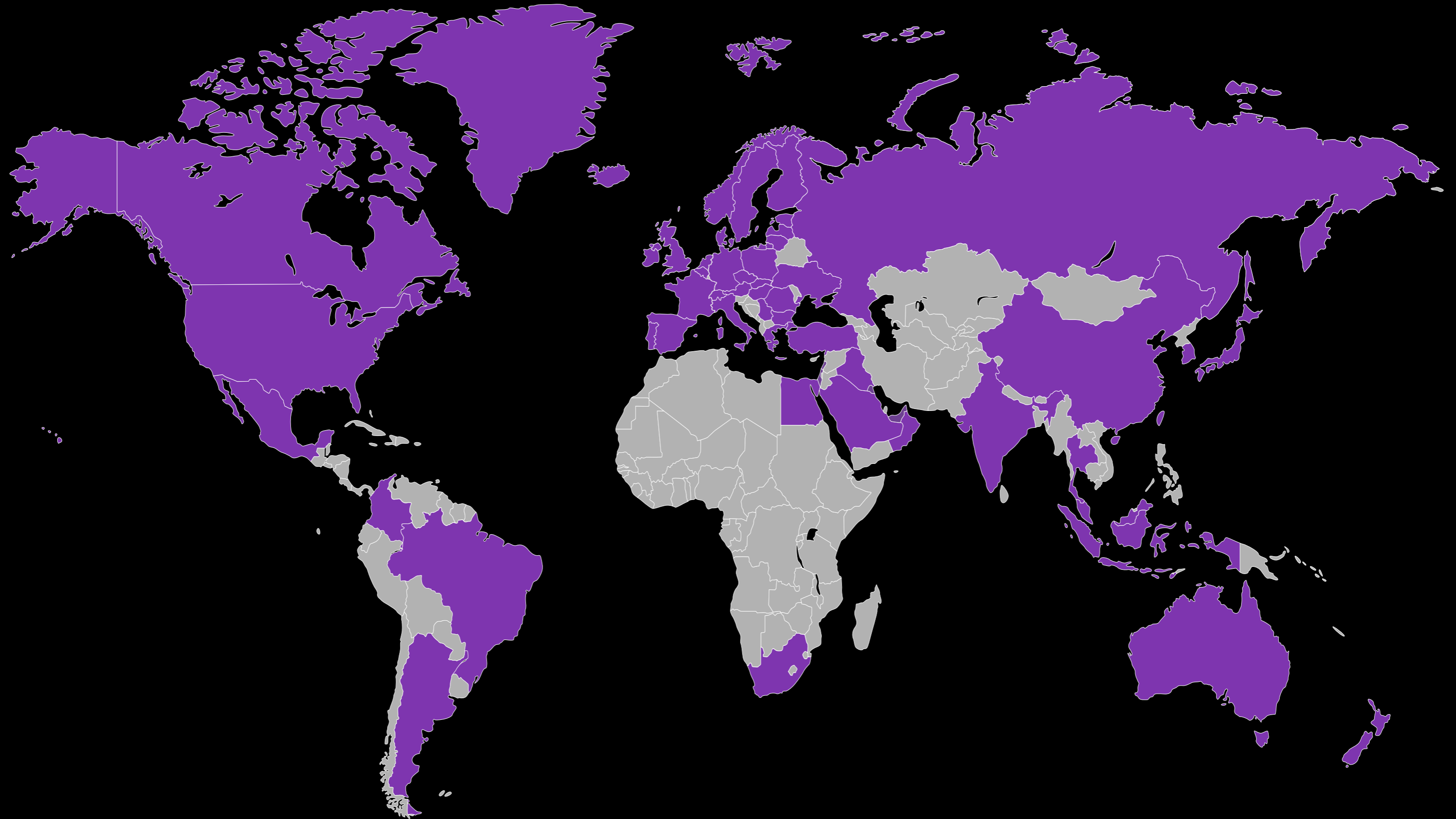
Power/Data Cable 0,2m
Transfer Power + Data through a single cable. PWB-CAB-0.2

ASTERA WORLDWIDE

BUY, RENT & SERVICE

You can buy and rent Astera lights in more than 50 countries. In addition, we have established certified service centers in most of these countries to ensure the best service and support possible no matter in which part of the world you are.

FIND YOUR DEALER: WWW.ASTERA-LED.COM/DEALER
FIND YOUR SERVICE-CENTER: WWW.ASTERA-LED.COM/SUPPORT





Contact

Aster LED Technology GmbH

Stahlgruberring 36

81829 Munich

Germany

E-mail: info@astera-led.com

Website: www.astera-led.com