



How to update the firmware and library

Spots unlimited BVBA
Cyriel buyssestraat 128
1800 Vilvoorde
gafferscontrol@spotsunlimited.be

What you need:

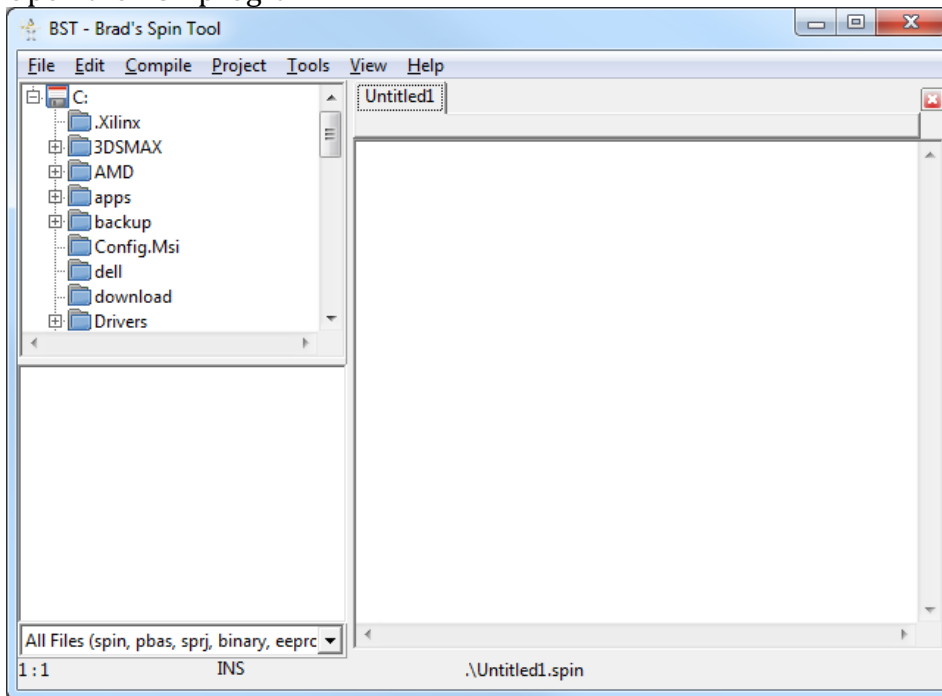
- 1) windows computer
- 2) PC software: <http://www.fnarfbargle.com/bst/Latest/>
- 3) Gafferscontrol firmware (.EEPROM file)
- 4) Library file (.EEPROM)
- 5) USB 2.0 cable to USB-B
- 6) Gaffers control

1) prepare the gaffers control:

You can find the USB connector at the back of the controller
Put the powerswitch ON
Connect the PC with the gaffers control with the USB cable

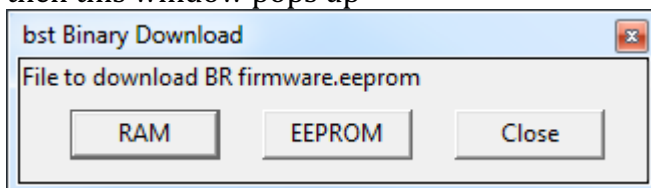
2) PC software:

Unzip the BST file and install BST
Open the BST program



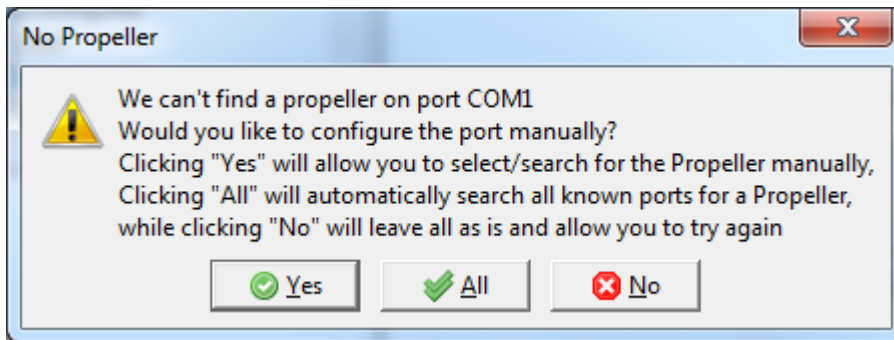
3) updating firmware:

select 'FILE' 'OPEN'
select 'gafferscontrolfirmware.EEPROM' file
then this window pops up



Now select EEPROM to upload the firmware to the EEPROM memory of the gaffers control

The software will search for the gafferscontrol , if the program doesn't find the controller, a new pop-up window appears:



Select 'ALL' to continue the search

If the program still doesn't find the controller, you can go to the 'trouble shoot' chapter.

When the UPLOAD was succesfull, you'll have to perform a reset on the controller by push and hold 'EDIT'button till the red CLEAR ALL button appears on the screen.

Then push CLEAR ALL, as soon as the controller restarts the update is finished.

4) **LIBRARY UPDATE:**

To update the library , you do the same as when you update the firmware.

But when you open the BST software, you select 'FILE' 'open'

And then the librarary.eeprom file

For the Library file it is important that you select the RAM memory in the pop-up window.

This upload can take a few seconds, when it's finished the controller starts again.

When you accidentally have uploaded the library to the EEPROM memory, the controller won't restart and then you'll first have to reinstall the firmware to the EEPROM memory.

5) **TROUBLESHOOT:**

-The software can't find the gaffers control:

First check the cables and try to restart the controller while connected.

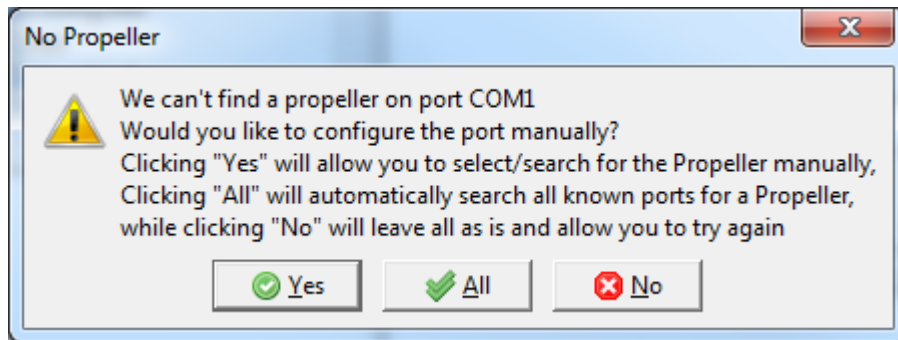
If that doesn't work it could be that you have to install the driver manually.

You can find the driver for your operating system at:

<http://www.ftdichip.com/Drivers/VCP.htm>

download and install the driver and try again.

When you get this pop-up



you can now select yes

This gives you a list from all possible COM ports on your PC.

Now you can select USB0 or USB1.

After closing the window the computer continues programming.